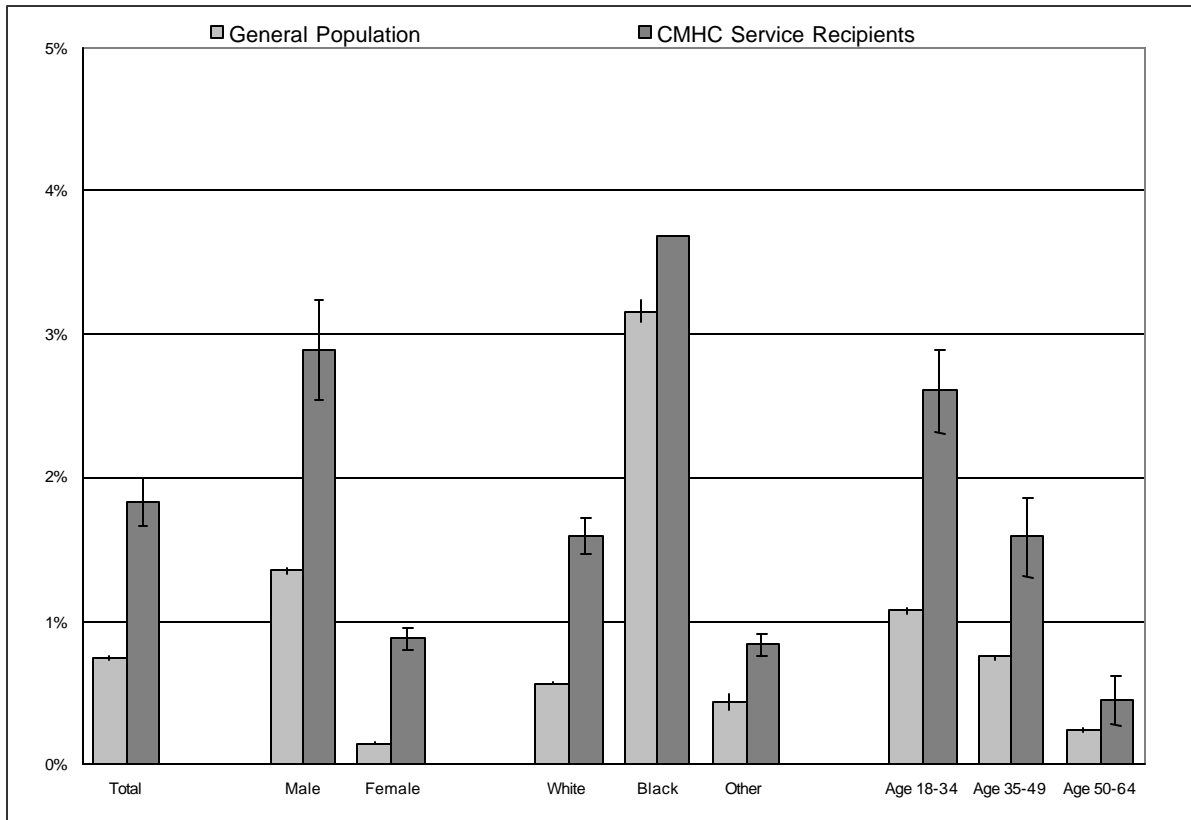


Rates of Incarceration

General Population and Community Mental Health Service Recipients (Adults Aged 18-64)

Kentucky FY2005

By Age, Gender, Race and Region



Prepared by:
The Bristol Observatory
521 Hewitt Road, Bristol, VT 05443
(802) 453-7070 / (802) 453-5061 Fax
www.thebristolobservatory.com

June 25, 2006

Table of Contents

Introduction1

Figures

Rates of Incarceration General Population and CMHC Service Recipient Rates
by Age, Gender and Race4
Relative Risk of Incarceration by Age, Gender and Race4
Rates of Incarceration General Population and CMHC Service Recipient Rates
by Region5
Relative Risk of Incarceration by Region5

Tables: General Population Rates, Mental Health Rates, and Relative Risk

Statewide Overview6
Statewide by Age and Gender7
Statewide by Age and Race8
Region 1 by Age and Gender9
Region 1 by Age and Race 10
Region 2 by Age and Gender 11
Region 2 by Age and Race 12
Region 3 by Age and Gender 13
Region 3 by Age and Race 14
Region 4 by Age and Gender 15
Region 4 by Age and Race 16
Region 5 by Age and Gender 17
Region 5 by Age and Race 18
Region 6 by Age and Gender 19
Region 6 by Age and Race 20
Region 7 by Age and Gender 21
Region 7 by Age and Race 22
Region 8 by Age and Gender 23
Region 8 by Age and Race 24
Region 10 by Age and Gender 25
Region 10 by Age and Race 26

Region 11 by Age and Gender	27
Region 11 by Age and Race	28
Region 12 by Age and Gender	29
Region 12 by Age and Race	30
Region 13 by Age and Gender	31
Region 13 by Age and Race	32
Region 14 by Age and Gender	33
Region 14 by Age and Race	34
Region 15 by Age and Gender	35
Region 15 by Age and Race	36
Probabilistic Population Estimation.....	37
Data Sets.....	38
Related Readings.....	39

This report provides a detailed overview of levels of rates of incarceration for recipients of mental health services in fourteen regions in the state of Kentucky during FY2005. As such it addresses an important public policy concern, and provides information necessary to meet new federal block grant reporting requirements.

The information presented here is based on analysis of anonymous extracts from existing databases using Probabilistic Population Estimation, an innovative statistical procedure that provides valid and reliable measures of criminal justice involvement while protecting the personal privacy of individuals and the confidentiality of medical records.

Findings indicate that 1.8% of adult recipients of public mental health services were incarcerated during FY2005. This incarceration rate is more than twice (2.5 times) the incarceration rate for members of the general population. Incarceration rates for service recipients and the degree of elevated risk of criminal justice involvement vary among regions of the state and among age, gender and race groups.

Background

Levels of criminal justice involvement for recipients of mental health services have been an important issue in behavioral health services research for a number of years. Two factors contributed to this interest. The first factor was the fear of an increasing “criminalization” of mental illness (1). This fear is related to a steady decrease in the population of state mental hospitals in the United States while the number of people in correctional facilities has been steadily increasing (2). The second factor is the increasing demand for empirical measures of mental health program performance that includes a strong emphasis on measures of the rate at which service recipients get into trouble with the law. Both the National Alliance for the Mentally Ill (3) and the Bazelon Center for Mental Health Law (4) have called on states to publish rates of criminal justice involvement of the clients of publicly funded community mental health programs.

More recently, measuring levels of criminal justice involvement for mental health service recipients has emerged as one of the core performance indicators for both mental health and substance abuse authorities at the national level. The current State Mental Health Data Infrastructure Grants for Quality Improvement, for instance, include the requirement that states participate in the CMHS Uniform Reporting System (URS) Measures for the Mental Health Block Grant Program. Table 19A of this reporting system requires reporting of the number of adult mental health service recipients who have had contact with the criminal justice system (5).

Change in criminal justice involvement is among the National Outcome Measures (NOMs) that will soon be required of the states by the Substance Abuse and Mental Health Services Administration (6). The data sets and the analytical approach used in this project provide valid and reliable measures of change in criminal justice involvement.

Method

This study was conducted exclusively using anonymous extracts from existing databases. No special purpose data collection was required. The data used in this analysis were extracted from

Analysis conducted by:
THE BRISTOL OBSERVATORY
www.thebristolobservatory.com bristob@together.net

databases maintained by the Kentucky Department of Corrections and Kentucky community mental health programs. These data sets include basic demographic information (date of birth, gender, Race and County) for each person served, and each person incarcerated during FY2005. In addition, information on the size of the population of the state's fourteen geographical regions, including age, gender and race specific population numbers was obtained from the United States Census. This information was used, in conjunction with the incarceration files, to derive rates of incarceration in the general population for comparison to incarceration rates for mental health service recipients. The approach to program evaluation used in this analysis has numerous advantages compared to program evaluations that require special purpose data collection (6).

Because the mental health and incarceration data sets do not share unique person identifiers, Probabilistic Population Estimation was used to determine the unduplicated number of people represented in the mental health data set who were also represented in the corresponding incarceration data set. Probabilistic Population Estimation is a statistical procedure that provides valid and reliable measures of the size and overlap of data sets that do not include unique person identifiers. These estimates are based on a comparison of the distribution of dates of birth in the data sets to the known distribution of dates of birth in the general population (7). This approach is particularly useful where concerns about the confidentiality of medical records limit the use of personally identifying information (8). A brief technical description of the procedure is provided at the end of this report. For a more detailed description, visit The Bristol Observatory web site. (9)

Findings

During Fiscal Year 2005, 1.8% of all adult recipients of public mental health services in Kentucky were incarcerated. Male service recipients were more likely to be incarcerated than female service recipients (2.9% vs. 0.9%). Young adult service recipients (aged 18-34) were more likely to be incarcerated than service recipients in the 35-49 or 50-64 age groups (2.6% vs. 1.6% and 0.4%, respectively). Black service recipients were more likely to be incarcerated than white service recipients or service recipients in other race groups (3.7% vs. 1.6% and 0.8%, respectively). Rates of incarcerated for recipients of mental health services ranged from 4.7% in Region 7 to less than 1% in Regions 11 and 12.

Overall, service recipients were almost 2.5 times as likely to be incarcerated when compared to the rate of incarceration for the general population (1.9% vs. 0.7%). Compared to members of the general population in the same demographic group, women had a greater elevated risk than men (6.0 vs. 2.1). Elevated risk of incarceration for mental health service recipients decreased with increasing age, but the differences were not significantly significant. Elevated risk of criminal charging was higher for white mental health service recipients (2.8) than for either black mental health service recipients (1.2) or other races for mental health service recipients (1.9).

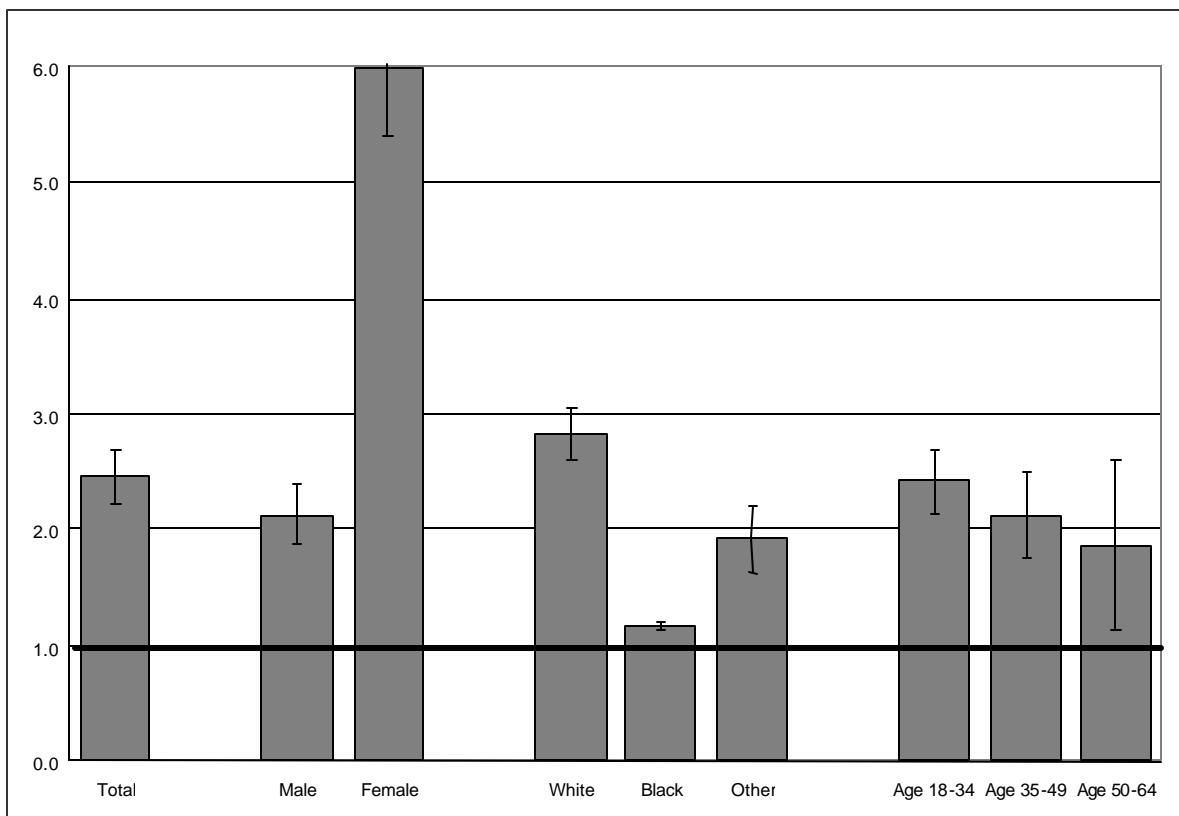
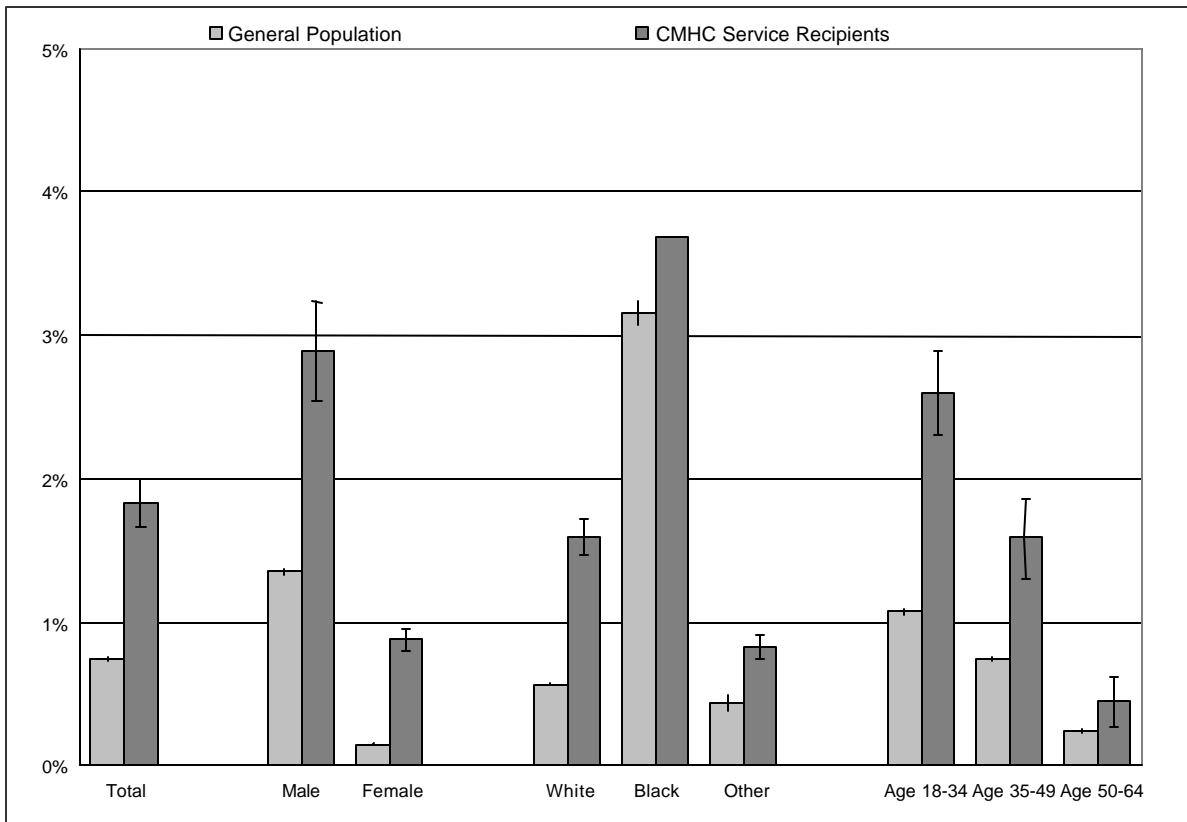
The tables that follow provide detailed findings, at the state and regional level, regarding rates of incarceration for recipients of mental health services and the general population Kentucky's 14 regions, as well as the relative risk of criminal charging for mental health service recipients. All information is provided overall, and for specific demographic groups.

Analysis conducted by:
THE BRISTOL OBSERVATORY
www.thebristolobservatory.com bristob@together.net

References

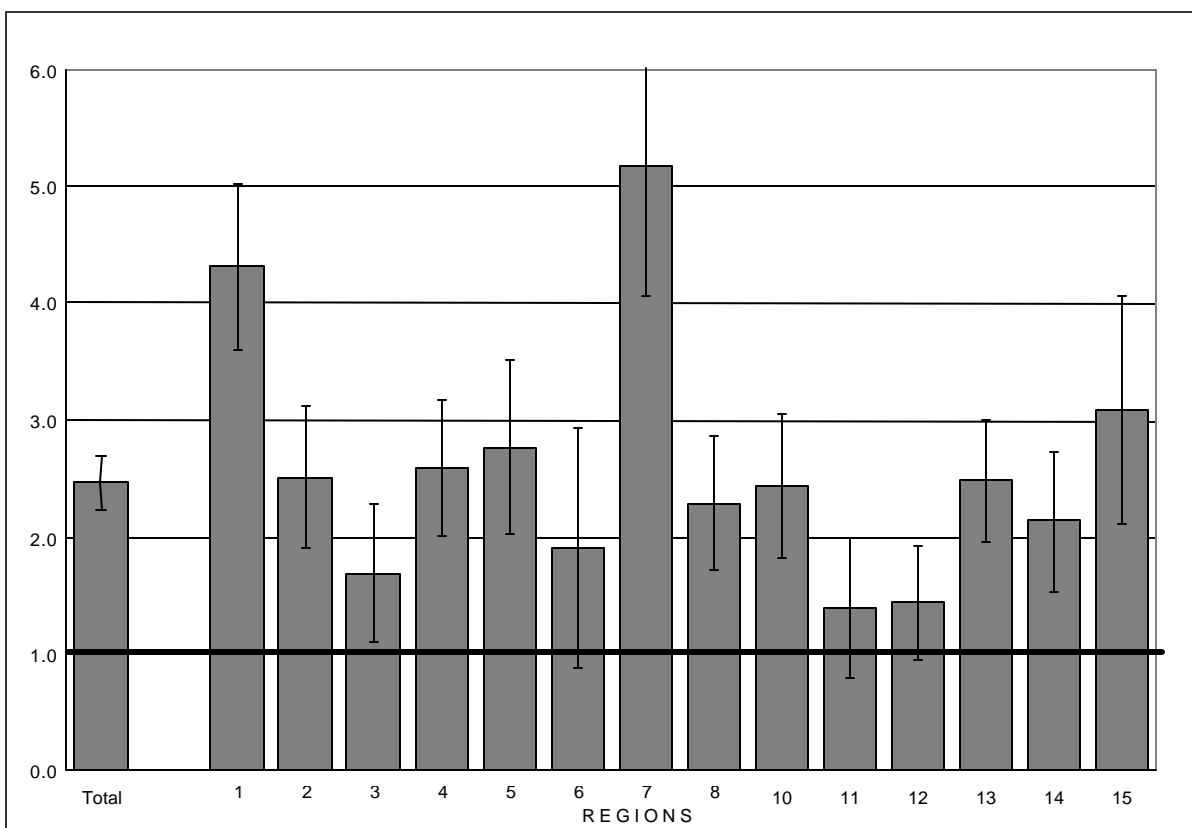
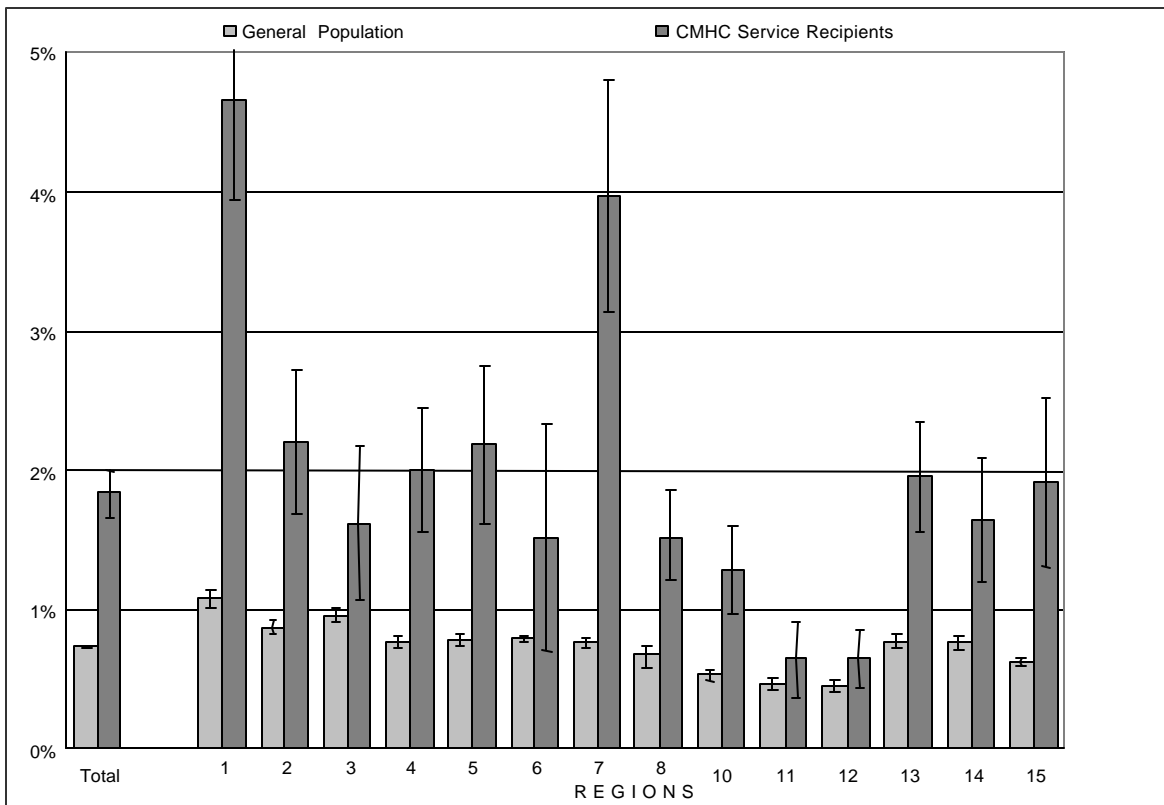
- (1) Torrey EF, Stieber J, Ezekiel J, et al.: (1992) Criminalizing the seriously mentally ill: The abuse of jails as mental hospitals, *Public Citizen's Health Research Group and the National Alliance for the Mentally Ill*, Washington, DC.
- (2) Steadman HJ, Monahan J, Duffee B, et al.: (1984) The impact of state mental hospital deinstitutionalization on United States prison populations, 1976-1978. *The Journal of Criminal Law and Criminology*. 75 (2): 474-490.
- (3) NAMI (1995) Principles for Managed Care, National Alliance for the Mentally Ill, Arlington, VA.
- (4) Koyanagi, C: (1995) Managing managed care for publicly financed mental health services, *Bazelon Center for Mental Health Law*, pp. 34-35.
- (5) CMHS (2004) Notice of Funding Availability State Mental Health Data Infrastructure Grants for Quality Improvement (SM 04-005).
http://alt.samhsa.gov/Grants/2004/nofa/sm04005nofa_DIG.htm
- (6) SAMHSA. National Outcome Measures (NOMs).
(<http://www.nationaloutcomemeasures.samhsa.gov./outcome/index.asp>.)
- (7) Pandiani JA and Banks SM (2003) Large Data Sets Are Powerful. *Psychiatric Services*, 54(5): 746
- (8) Banks SM & Pandiani, JA (2001) Probabilistic population estimation of the size and overlap of data sets based on date of birth. *Statistics in Medicine*. 20:1421-1430.
- (9) Pandiani JA, Banks SM, and Schacht LM: (1998a) Personal privacy vs. public accountability: A technological solution to an ethical dilemma. *Journal of Behavioral Health Services and Research*, 25 (4): 456-463.
- (10) The Bristol Observatory - Probabilistic Population Estimation.
<http://www.thebristolobservatory>

Rates of Incarceration by Age, Gender and Race Kentucky FY 2005



Analysis conducted by: THE BRISTOL OBSERVATORY
www.thebristolobservatory.com bristob@together.net

Rates of Incarceration by Regions Kentucky FY 2005



Analysis conducted by: THE BRISTOL OBSERVATORY
www.thebristolobservatory.com bristob@together.net

Rate of Incarceration
For Mental Health Service Recipients and the General Population
and Relative Risk of Incarceration for Mental Health Service Recipients
by Age, Gender and Race, Kentucky: FY 2005

	General Population			Mental Health Service Recipients			Relative Risk
	Total Population	Number Arrested	Arrest Rate	Total Served	Overlap	Rate	
Total	2,542,158	18,933 ±77	0.7% ± 0.01%	123,128 ±313	2,259 ±211	1.8% ± 0.2%	2.5 ± 0.2
Male	1,260,040	17,057 ±76	1.4% ± 0.02%	58,748 ±213	1,695 ±205	2.9% ± 0.3%	2.1 ± 0.3
Female	1,282,118	1,876 ±9	0.1% ± 0.01%	64,380 ±229	564 ±49	0.9% ± 0.1%	6.0 ± 0.6
White	2,298,918	12,946 ±45	0.6% ± 0.01%	109,147 ±267	1,740 ±135	1.6% ± 0.1%	2.8 ± 0.2
Black	180,876	5,712 ±35	3.2% ± 0.08%	11,261 ±49	416 ±59	3.7% ± 0.0%	1.2 ± 0.0
Other	62,364	270 ±2	0.4% ± 0.05%	1,552 ±6	13 ±1	0.8% ± 0.1%	1.9 ± 0.3
Age 18-34	969,966	10,421 ±62	1.1% ± 0.02%	54,408 ±219	1,417 ±160	2.6% ± 0.3%	2.4 ± 0.3
Age 35-49	936,641	6,979 ±44	0.7% ± 0.02%	46,807 ±201	744 ±131	1.6% ± 0.3%	2.1 ± 0.4
Age 50-64	635,551	1,532 ±12	0.2% ± 0.01%	21,913 ±98	98 ±38	0.4% ± 0.2%	1.9 ± 0.7
Region 1	124,595	1,347 ±16	1.1% ± 0.06%	4,883 ±41	228 ±35	4.7% ± 0.7%	4.3 ± 0.7
Region 2	126,529	1,109 ±13	0.9% ± 0.05%	7,193 ±60	158 ±37	2.2% ± 0.5%	2.5 ± 0.6
Region 3	126,685	1,216 ±14	1.0% ± 0.05%	6,220 ±53	101 ±35	1.6% ± 0.6%	1.7 ± 0.6
Region 4	160,369	1,242 ±15	0.8% ± 0.04%	10,288 ±87	206 ±45	2.0% ± 0.4%	2.6 ± 0.6
Region 5	150,585	1,190 ±14	0.8% ± 0.04%	6,371 ±54	139 ±36	2.2% ± 0.6%	2.8 ± 0.7
Region 6	544,760	4,334 ±53	0.8% ± 0.02%	17,964 ±162	273 ±146	1.5% ± 0.8%	1.9 ± 1.0
Region 7	244,068	1,874 ±23	0.8% ± 0.03%	5,854 ±49	232 ±49	4.0% ± 0.8%	5.2 ± 1.1
Region 8	33,746	225 ±3	0.7% ± 0.09%	2,739 ±23	42 ±9	1.5% ± 0.3%	2.3 ± 0.6
Region 10	134,205	711 ±9	0.5% ± 0.04%	10,898 ±94	140 ±34	1.3% ± 0.3%	2.4 ± 0.6
Region 11	102,273	470 ±5	0.5% ± 0.04%	7,958 ±66	51 ±21	0.6% ± 0.3%	1.4 ± 0.6
Region 12	76,684	348 ±4	0.5% ± 0.05%	9,238 ±78	60 ±20	0.7% ± 0.2%	1.4 ± 0.5
Region 13	148,060	1,162 ±13	0.8% ± 0.05%	11,515 ±98	225 ±45	2.0% ± 0.4%	2.5 ± 0.5
Region 14	118,438	913 ±10	0.8% ± 0.05%	6,811 ±56	112 ±31	1.6% ± 0.5%	2.1 ± 0.6
Region 15	451,161	2,790 ±33	0.6% ± 0.02%	15,196 ±134	291 ±91	1.9% ± 0.6%	3.1 ± 1.0

This project relied exclusively on analysis of anonymous extracts from databases maintained by Kentucky state agencies. Community Mental Health data was provided by the Kentucky Community Mental Health Programs and includes all adults Served during FY2005. The second data set includes all individuals in adult corrections during the same year. Data was provided by Kentucky Department of Corrections. Race analysis excludes the 1% of individuals for whom race was not reported. Because these data sets do not share unique person identifiers, Probabilistic Population Estimation (PPE) was used to determine caseload size and overlap. Population data was obtained from the 2000 US Census Bureau website <http://www.census.gov/>. A relative rate of 1.0 indicates no difference in arrest rates between CMH service recipients and the general population. A relative rate that is significantly greater than 1.0 indicates that CMH service recipients have a higher arrest rate. A relative rate of 2.0, for instance, would indicate that CMH recipients were twice as likely as members of the general population to be arrested. A relative rate that is significantly less than 1.0 indicates that CMH service recipients have a lower arrest rate. A relative rate of 0.5, for instance, would indicate that CMH recipients were half as likely to be arrested.

**Rate of Incarceration
For Mental Health Service Recipients and the General Population
and Relative Risk of Incarceration for Mental Health Service Recipients
by Age and Gender, Kentucky: FY 2005**

	General Population			Mental Health Service Recipients			Relative Risk
	Total Population	Number Arrested	Arrest Rate	Total Served	Overlap	Rate	
Total	2,542,158	18,933 ±77	0.7% ± 0.01%	123,128 ±313	2,259 ±211	1.8% ± 0.2%	2.5 ± 0.2
Male	1,260,040	17,057 ±76	1.4% ± 0.02%	58,748 ±213	1,695 ±205	2.9% ± 0.3%	2.1 ± 0.3
Female	1,282,118	1,876 ±9	0.1% ± 0.01%	64,380 ±229	564 ±49	0.9% ± 0.1%	6.0 ± 0.6
Age 18-34							
Total	969,966	10,421 ±62	1.1% ± 0.02%	54,408 ±219	1,417 ±160	2.6% ± 0.3%	2.4 ± 0.3
Male	489,409	9,386 ±62	1.9% ± 0.04%	26,544 ±149	1,072 ±156	4.0% ± 0.6%	2.1 ± 0.3
Female	480,557	1,036 ±7	0.2% ± 0.01%	27,864 ±161	345 ±37	1.2% ± 0.1%	5.8 ± 0.7
Age 35-49							
Total	936,641	6,979 ±44	0.7% ± 0.02%	46,807 ±201	744 ±131	1.6% ± 0.3%	2.1 ± 0.4
Male	462,480	6,227 ±43	1.3% ± 0.03%	22,722 ±140	541 ±127	2.4% ± 0.6%	1.8 ± 0.4
Female	474,161	752 ±6	0.2% ± 0.01%	24,085 ±144	203 ±31	0.8% ± 0.1%	5.3 ± 0.9
Age 50-64							
Total	635,551	1,532 ±12	0.2% ± 0.01%	21,913 ±98	98 ±38	0.4% ± 0.2%	1.9 ± 0.7
Male	308,151	1,444 ±12	0.5% ± 0.02%	9,482 ±61	83 ±38	0.9% ± 0.4%	1.9 ± 0.9
Female	327,400	88 ±1	0.0% ± 0.01%	12,431 ±77	16 ±8	0.1% ± 0.1%	4.7 ± 2.5

This project relied exclusively on analysis of anonymous extracts from databases maintained by Kentucky state agencies. Community Mental Health data was provided by the Kentucky Community Mental Health Programs and includes all adults Served during FY2005. The second data set includes all individuals in adult corrections during the same year. Data was provided by Kentucky Department of Corrections. Race analysis excludes the 1% of individuals for whom race was not reported. Because these data sets do not share unique person identifiers, Probabilistic Population Estimation (PPE) was used to determine caseload size and overlap. Population data was obtained from the 2000 US Census Bureau website <http://www.census.gov/>.

A relative rate of 1.0 indicates no difference in arrest rates between CMH service recipients and the general population. A relative rate that is significantly greater than 1.0 indicates that CMH service recipients have a higher arrest rate. A relative rate of 2.0, for instance, would indicate that CMH recipients were twice as likely as members of the general population to be arrested. A relative rate that is significantly less than 1.0 indicates that CMH service recipients have a lower arrest rate. A relative rate of 0.5, for instance, would indicate that CMH recipients were half as likely to be arrested.

Rate of Incarceration
For Mental Health Service Recipients and the General Population
and Relative Risk of Incarceration for Mental Health Service Recipients
By Age and Race, Kentucky: FY 2005

	General Population			Mental Health Service Recipients			Relative Risk
	Total Population	Number Arrested	Arrest Rate	Total Served	Overlap	Rate	
Total	2,542,158	18,929 ±57	0.7% ± 0.01%	121,959 ±271	2,168 ±147	1.8% ± 0.1%	2.4 ± 0.2
White	2,298,918	12,946 ±45	0.6% ± 0.01%	109,147 ±267	1,740 ±135	1.6% ± 0.1%	2.8 ± 0.2
Black	180,876	5,712 ±35	3.2% ± 0.08%	11,261 ±49	416 ±59	3.7% ± 0.0%	1.2 ± 0.0
Other	62,364	270 ±2	0.4% ± 0.05%	1,552 ±6	13 ±1	0.8% ± 0.1%	1.9 ± 0.3
Age 18-34							
Total	969,966	10,447 ±46	1.1% ± 0.02%	53,752 ±189	1,316 ±110	2.4% ± 0.2%	2.3 ± 0.2
White	857,148	6,934 ±35	0.8% ± 0.02%	47,906 ±186	1,103 ±102	2.3% ± 0.2%	2.8 ± 0.3
Black	79,788	3,329 ±29	4.2% ± 0.14%	4,954 ±33	204 ±43	4.1% ± 0.0%	1.0 ± 0.0
Other	33,030	184 ±2	0.6% ± 0.08%	893 ±5	9 ±1	1.0% ± 0.1%	1.8 ± 0.3
Age 35-49							
Total	936,641	6,952 ±32	0.7% ± 0.02%	46,405 ±173	742 ±93	1.6% ± 0.2%	2.2 ± 0.3
White	849,860	4,879 ±27	0.6% ± 0.02%	41,276 ±170	550 ±85	1.3% ± 0.2%	2.3 ± 0.4
Black	67,131	1,998 ±19	3.0% ± 0.13%	4,640 ±34	188 ±39	4.1% ± 0.0%	1.4 ± 0.1
Other	19,650	75 ±1	0.4% ± 0.09%	489 ±3	4 ±1	0.8% ± 0.2%	2.1 ± 0.6
Age 50-64							
Total	635,551	1,530 ±9	0.2% ± 0.01%	21,802 ±89	110 ±28	0.5% ± 0.1%	2.1 ± 0.5
White	591,910	1,134 ±8	0.2% ± 0.01%	19,964 ±88	86 ±25	0.4% ± 0.0%	2.3 ± 0.1
Black	33,957	385 ±5	1.1% ± 0.11%	1,667 ±13	24 ±11	1.4% ± 0.7%	1.3 ± 0.6
Other	9,684	11 ±0	0.1% ± 0.07%	171 ±2	0 ±0	0.0% ± 0.0%	0.0 ± 0.0

This project relied exclusively on analysis of anonymous extracts from databases maintained by Kentucky state agencies. Community Mental Health data was provided by the Kentucky Community Mental Health Programs and includes all adults Served during FY2005. The second data set includes all individuals in adult corrections during the same year. Data was provided by Kentucky Department of Corrections. Race analysis excludes the 1% of individuals for whom race was not reported. Because these data sets do not share unique person identifiers, Probabilistic Population Estimation (PPE) was used to determine caseload size and overlap. Population data was obtained from the 2000 US Census Bureau website <http://www.census.gov/>.

A relative rate of 1.0 indicates no difference in arrest rates between CMH service recipients and the general population. A relative rate that is significantly greater than 1.0 indicates that CMH service recipients have a higher arrest rate. A relative rate of 2.0, for instance, would indicate that CMH recipients were twice as likely as members of the general population to be arrested. A relative rate that is significantly less than 1.0 indicates that CMH service recipients have a lower arrest rate. A relative rate of 0.5, for instance, would indicate that CMH recipients were half as likely to be arrested.

**Rate of Incarceration
For Mental Health Service Recipients and the General Population
and Relative Risk of Incarceration for Mental Health Service Recipients
by Age and Gender, Region 1 - Kentucky: FY2005**

	General Population			Mental Health Service Recipients			Relative Risk
	Total Population	Number Arrested	Arrest Rate	Total Served	Overlap	Rate	
Total	124,595	1,347 ±16	1.1% ± 0.06%	4,883 ±41	228 ±35	4.7% ± 0.7%	4.3 ± 0.7
Male	61,388	1,185 ±15	1.9% ± 0.11%	2,452 ±30	175 ±34	7.1% ± 1.4%	3.7 ± 0.8
Female	63,207	163 ±2	0.3% ± 0.04%	2,431 ±28	53 ±9	2.2% ± 0.4%	8.4 ± 1.9
Age 18-34							
Total	44,957	748 ±13	1.7% ± 0.12%	2,197 ±29	137 ±28	6.2% ± 1.3%	3.7 ± 0.8
Male	22,517	660 ±12	2.9% ± 0.22%	1,185 ±22	109 ±27	9.2% ± 2.3%	3.1 ± 0.8
Female	22,440	88 ±2	0.4% ± 0.08%	1,013 ±19	28 ±6	2.8% ± 0.6%	7.1 ± 2.2
Age 35-49							
Total	44,750	491 ±9	1.1% ± 0.10%	1,874 ±26	76 ±21	4.0% ± 1.1%	3.7 ± 1.1
Male	22,019	424 ±8	1.9% ± 0.18%	927 ±18	54 ±20	5.9% ± 2.2%	3.0 ± 1.2
Female	22,731	68 ±2	0.3% ± 0.07%	947 ±19	22 ±6	2.3% ± 0.6%	7.7 ± 2.8
Age 50-64							
Total	34,888	108 ±3	0.3% ± 0.06%	812 ±12	15 ±6	1.9% ± 0.8%	6.0 ± 2.8
Male	16,852	101 ±3	0.6% ± 0.12%	341 ±8	12 ±6	3.6% ± 1.8%	6.0 ± 3.3
Female	18,036	7 ±0	0.0% ± 0.03%	471 ±10	3 ±1	0.6% ± 0.2%	15.5 ± 12.5

This project relied exclusively on analysis of anonymous extracts from databases maintained by Kentucky state agencies. Community Mental Health data was provided by the Kentucky Community Mental Health Programs and includes all adults Served during FY2005. The second data set includes all individuals in adult corrections during the same year. Data was provided by Kentucky Department of Corrections. Race analysis excludes the 1% of individuals for whom race was not reported. Because these data sets do not share unique person identifiers, Probabilistic Population Estimation (PPE) was used to determine caseload size and overlap. Population data was obtained from the 2000 US Census Bureau website <http://www.census.gov/>.

A relative rate of 1.0 indicates no difference in arrest rates between CMH service recipients and the general population. A relative rate that is significantly greater than 1.0 indicates that CMH service recipients have a higher arrest rate. A relative rate of 2.0, for instance, would indicate that CMH recipients were twice as likely as members of the general population to be arrested. A relative rate that is significantly less than 1.0 indicates that CMH service recipients have a lower arrest rate. A relative rate of 0.5, for instance, would indicate that CMH recipients were half as likely to be arrested.

Rate of Incarceration
For Mental Health Service Recipients and the General Population
and Relative Risk of Incarceration for Mental Health Service Recipients
by Age and Race, Region 1 - Kentucky: FY2005

	General Population			Mental Health Service Recipients			Relative Risk
	Total Population	Number Arrested	Arrest Rate	Total Served	Overlap	Rate	
Total	124,595	1,340 ±12	1.1% ± 0.06%	4,888 ±36	225 ±26	4.6% ± 0.5%	4.3 ± 0.5
White	114,431	916 ±10	0.8% ± 0.05%	4,252 ±35	174 ±25	4.1% ± 0.6%	5.1 ± 0.8
Black	7,487	408 ±5	5.5% ± 0.53%	573 ±5	50 ±7	8.7% ± 0.0%	1.6 ± 0.2
Other	2,677	16 ±0	0.6% ± 0.29%	63 ±1	1 ±0	1.6% ± 0.2%	2.6 ± 1.3
Age 18-34							
Total	44,957	747 ±9	1.7% ± 0.12%	2,205 ±25	137 ±20	6.2% ± 0.9%	3.7 ± 0.6
White	40,230	489 ±8	1.2% ± 0.11%	1,893 ±25	110 ±19	5.8% ± 1.0%	4.8 ± 0.9
Black	3,258	246 ±5	7.6% ± 0.94%	277 ±4	25 ±5	9.2% ± 0.0%	1.2 ± 0.2
Other	1,469	11 ±0	0.8% ± 0.44%	35 ±1	1 ±0	2.9% ± 0.3%	3.8 ± 2.3
Age 35-49							
Total	44,750	486 ±7	1.1% ± 0.10%	1,874 ±23	75 ±16	4.0% ± 0.9%	3.7 ± 0.9
White	41,225	352 ±6	0.9% ± 0.09%	1,639 ±23	56 ±16	3.4% ± 1.0%	4.0 ± 1.2
Black	2,741	132 ±2	4.8% ± 0.82%	212 ±3	19 ±4	8.8% ± 0.0%	1.8 ± 0.3
Other	784	3 ±0	0.4% ± 0.43%	23 ±1	0 ±0	0.0% ± 0.0%	0.0 ± 0.0
Age 50-64							
Total	34,888	107 ±2	0.3% ± 0.06%	810 ±11	14 ±5	1.7% ± 0.6%	5.5 ± 2.2
White	32,976	75 ±2	0.2% ± 0.05%	720 ±11	8 ±5	1.1% ± 0.0%	4.7 ± 1.1
Black	1,488	30 ±1	2.0% ± 0.72%	85 ±2	6 ±1	6.9% ± 1.5%	3.4 ± 1.4
Other	424	2 ±0	0.5% ± 0.65%	5 ±0	0 ±0	0.0% ± 0.0%	0.0 ± 0.0

This project relied exclusively on analysis of anonymous extracts from databases maintained by Kentucky state agencies. Community Mental Health data was provided by the Kentucky Community Mental Health Programs and includes all adults Served during FY2005. The second data set includes all individuals in adult corrections during the same year. Data was provided by Kentucky Department of Corrections. Race analysis excludes the 1% of individuals for whom race was not reported. Because these data sets do not share unique person identifiers, Probabilistic Population Estimation (PPE) was used to determine caseload size and overlap. Population data was obtained from the 2000 US Census Bureau website <http://www.census.gov/>.

A relative rate of 1.0 indicates no difference in arrest rates between CMH service recipients and the general population. A relative rate that is significantly greater than 1.0 indicates that CMH service recipients have a higher arrest rate. A relative rate of 2.0, for instance, would indicate that CMH recipients were twice as likely as members of the general population to be arrested. A relative rate that is significantly less than 1.0 indicates that CMH service recipients have a lower arrest rate. A relative rate of 0.5, for instance, would indicate that CMH recipients were half as likely to be arrested.

Rate of Incarceration
For Mental Health Service Recipients and the General Population
and Relative Risk of Incarceration for Mental Health Service Recipients
by Age and Gender, Region 2 - Kentucky: FY2005

	General Population			Mental Health Service Recipients			Relative Risk
	Total Population	Number Arrested	Arrest Rate	Total Served	Overlap	Rate	
Total	126,529	1,109 ±13	0.9% ± 0.05%	7,193 ±60	158 ±37	2.2% ± 0.5%	2.5 ± 0.6
Male	65,355	991 ±13	1.5% ± 0.09%	3,567 ±43	125 ±36	3.5% ± 1.0%	2.3 ± 0.7
Female	61,174	118 ±2	0.2% ± 0.03%	3,626 ±42	34 ±9	0.9% ± 0.3%	4.8 ± 1.6
Age 18-34							
Total	52,077	632 ±11	1.2% ± 0.09%	3,170 ±42	118 ±29	3.7% ± 0.9%	3.1 ± 0.8
Male	28,662	571 ±11	2.0% ± 0.16%	1,703 ±32	93 ±28	5.5% ± 1.7%	2.8 ± 0.9
Female	23,415	61 ±1	0.3% ± 0.07%	1,467 ±27	24 ±6	1.6% ± 0.4%	6.3 ± 2.2
Age 35-49							
Total	42,760	400 ±7	0.9% ± 0.09%	2,720 ±38	34 ±22	1.3% ± 0.8%	1.3 ± 0.9
Male	21,404	348 ±7	1.6% ± 0.17%	1,317 ±26	26 ±21	2.0% ± 1.6%	1.2 ± 1.0
Female	21,356	51 ±1	0.2% ± 0.07%	1,402 ±28	9 ±7	0.6% ± 0.5%	2.5 ± 2.2
Age 50-64							
Total	31,692	77 ±2	0.2% ± 0.05%	1,302 ±20	7 ±7	0.5% ± 0.5%	2.1 ± 2.1
Male	15,289	72 ±2	0.5% ± 0.11%	546 ±12	6 ±7	1.0% ± 1.2%	2.2 ± 2.6
Female	16,403	5 ±0	0.0% ± 0.03%	756 ±16	1 ±0	0.1% ± 0.0%	4.3 ± 3.8

This project relied exclusively on analysis of anonymous extracts from databases maintained by Kentucky state agencies. Community Mental Health data was provided by the Kentucky Community Mental Health Programs and includes all adults Served during FY2005. The second data set includes all individuals in adult corrections during the same year. Data was provided by Kentucky Department of Corrections. Race analysis excludes the 1% of individuals for whom race was not reported. Because these data sets do not share unique person identifiers, Probabilistic Population Estimation (PPE) was used to determine caseload size and overlap. Population data was obtained from the 2000 US Census Bureau website <http://www.census.gov/>.

A relative rate of 1.0 indicates no difference in arrest rates between CMH service recipients and the general population. A relative rate that is significantly greater than 1.0 indicates that CMH service recipients have a higher arrest rate. A relative rate of 2.0, for instance, would indicate that CMH recipients were twice as likely as members of the general population to be arrested. A relative rate that is significantly less than 1.0 indicates that CMH service recipients have a lower arrest rate. A relative rate of 0.5, for instance, would indicate that CMH recipients were half as likely to be arrested.

Rate of Incarceration
For Mental Health Service Recipients and the General Population
and Relative Risk of Incarceration for Mental Health Service Recipients
by Age and Race, Region 2 - Kentucky: FY2005

	General Population			Mental Health Service Recipients			Relative Risk
	Total Population	Number Arrested	Arrest Rate	Total Served	Overlap	Rate	
Total	124,595	1,105 ±10	0.9% ± 0.05%	7,153 ±50	173 ±25	2.4% ± 0.4%	2.7 ± 0.4
White	114,431	687 ±8	0.6% ± 0.04%	6,001 ±50	130 ±24	2.2% ± 0.4%	3.6 ± 0.7
Black	7,487	404 ±5	5.4% ± 0.53%	1,036 ±9	41 ±9	3.9% ± 0.0%	0.7 ± 0.1
Other	2,677	14 ±0	0.5% ± 0.27%	117 ±2	2 ±0	1.7% ± 0.3%	3.3 ± 1.8
Age 18-34							
Total	44,957	629 ±8	1.4% ± 0.11%	3,159 ±35	128 ±19	4.1% ± 0.6%	2.9 ± 0.5
White	40,230	377 ±6	0.9% ± 0.09%	2,582 ±34	100 ±18	3.9% ± 0.7%	4.1 ± 0.8
Black	3,258	240 ±5	7.4% ± 0.93%	494 ±7	27 ±8	5.4% ± 0.0%	0.7 ± 0.1
Other	1,469	12 ±0	0.8% ± 0.46%	84 ±2	2 ±0	2.4% ± 0.4%	2.9 ± 1.7
Age 35-49							
Total	44,750	399 ±5	0.9% ± 0.09%	2,696 ±32	36 ±16	1.3% ± 0.6%	1.5 ± 0.7
White	41,225	267 ±5	0.6% ± 0.08%	2,274 ±32	28 ±16	1.2% ± 0.7%	1.9 ± 1.1
Black	2,741	131 ±3	4.8% ± 0.82%	398 ±6	9 ±4	2.2% ± 0.0%	0.5 ± 0.1
Other	784	2 ±0	0.3% ± 0.35%	24 ±1	0 ±0	0.0% ± 0.0%	0.0 ± 0.0
Age 50-64							
Total	34,888	77 ±2	0.2% ± 0.05%	1,297 ±17	8 ±3	0.6% ± 0.2%	2.9 ± 1.3
White	32,976	43 ±1	0.1% ± 0.04%	1,145 ±17	3 ±2	0.2% ± 0.0%	1.9 ± 0.6
Black	1,488	33 ±1	2.2% ± 0.76%	144 ±3	6 ±2	3.8% ± 1.5%	1.7 ± 0.9
Other	424	0 ±0	0.0% ± 0.00%	9 ±0	0 ±0	0.0% ± 0.0%	-----

This project relied exclusively on analysis of anonymous extracts from databases maintained by Kentucky state agencies. Community Mental Health data was provided by the Kentucky Community Mental Health Programs and includes all adults Served during FY2005. The second data set includes all individuals in adult corrections during the same year. Data was provided by Kentucky Department of Corrections. Race analysis excludes the 1% of individuals for whom race was not reported. Because these data sets do not share unique person identifiers, Probabilistic Population Estimation (PPE) was used to determine caseload size and overlap. Population data was obtained from the 2000 US Census Bureau website <http://www.census.gov/>.

A relative rate of 1.0 indicates no difference in arrest rates between CMH service recipients and the general population. A relative rate that is significantly greater than 1.0 indicates that CMH service recipients have a higher arrest rate. A relative rate of 2.0, for instance, would indicate that CMH recipients were twice as likely as members of the general population to be arrested. A relative rate that is significantly less than 1.0 indicates that CMH service recipients have a lower arrest rate. A relative rate of 0.5, for instance, would indicate that CMH recipients were half as likely to be arrested.

**Rate of Incarceration
For Mental Health Service Recipients and the General Population
and Relative Risk of Incarceration for Mental Health Service Recipients
by Age and Gender, Region 3 - Kentucky: FY2005**

	General Population			Mental Health Service Recipients			Relative Risk
	Total Population	Number Arrested	Arrest Rate	Total Served	Overlap	Rate	
Total	126,685	1,216 ±14	1.0% ± 0.05%	6,220 ±53	101 ±35	1.6% ± 0.6%	1.7 ± 0.6
Male	62,650	1,078 ±14	1.7% ± 0.10%	2,489 ±29	71 ±33	2.8% ± 1.3%	1.7 ± 0.8
Female	64,035	138 ±2	0.2% ± 0.04%	3,731 ±44	30 ±11	0.8% ± 0.3%	3.7 ± 1.5
Age 18-34							
Total	45,493	662 ±11	1.5% ± 0.11%	2,797 ±38	48 ±27	1.7% ± 1.0%	1.2 ± 0.7
Male	22,855	586 ±11	2.6% ± 0.21%	1,108 ±20	27 ±26	2.5% ± 2.3%	1.0 ± 0.9
Female	22,638	76 ±2	0.3% ± 0.08%	1,689 ±31	20 ±8	1.2% ± 0.5%	3.6 ± 1.7
Age 35-49							
Total	47,640	474 ±8	1.0% ± 0.09%	2,387 ±34	46 ±21	1.9% ± 0.9%	2.0 ± 0.9
Male	23,465	414 ±8	1.8% ± 0.17%	975 ±19	38 ±20	3.9% ± 2.0%	2.2 ± 1.2
Female	24,175	61 ±1	0.3% ± 0.06%	1,412 ±28	9 ±7	0.6% ± 0.5%	2.4 ± 2.1
Age 50-64							
Total	33,552	80 ±2	0.2% ± 0.05%	1,036 ±16	7 ±5	0.6% ± 0.5%	2.7 ± 2.1
Male	16,330	78 ±2	0.5% ± 0.11%	405 ±9	6 ±5	1.4% ± 1.2%	2.9 ± 2.6
Female	17,222	2 ±0	0.0% ± 0.02%	630 ±13	1 ±0	0.2% ± 0.0%	13.7 ± 19.0

This project relied exclusively on analysis of anonymous extracts from databases maintained by Kentucky state agencies. Community Mental Health data was provided by the Kentucky Community Mental Health Programs and includes all adults Served during FY2005. The second data set includes all individuals in adult corrections during the same year. Data was provided by Kentucky Department of Corrections. Race analysis excludes the 1% of individuals for whom race was not reported. Because these data sets do not share unique person identifiers, Probabilistic Population Estimation (PPE) was used to determine caseload size and overlap. Population data was obtained from the 2000 US Census Bureau website <http://www.census.gov/>.

A relative rate of 1.0 indicates no difference in arrest rates between CMH service recipients and the general population. A relative rate that is significantly greater than 1.0 indicates that CMH service recipients have a higher arrest rate. A relative rate of 2.0, for instance, would indicate that CMH recipients were twice as likely as members of the general population to be arrested. A relative rate that is significantly less than 1.0 indicates that CMH service recipients have a lower arrest rate. A relative rate of 0.5, for instance, would indicate that CMH recipients were half as likely to be arrested.

Rate of Incarceration
For Mental Health Service Recipients and the General Population
and Relative Risk of Incarceration for Mental Health Service Recipients
by Age and Race, Region 3 - Kentucky: FY2005

	General Population			Mental Health Service Recipients			Relative Risk
	Total Population	Number Arrested	Arrest Rate	Total Served	Overlap	Rate	
Total	126,685	1,212 ±11	1.0% ± 0.05%	6,224 ±49	107 ±28	1.7% ± 0.4%	1.8 ± 0.5
White	118,700	939 ±11	0.8% ± 0.05%	5,701 ±49	90 ±28	1.6% ± 0.5%	2.0 ± 0.6
Black	6,083	257 ±3	4.2% ± 0.52%	371 ±4	16 ±2	4.2% ± 0.0%	1.0 ± 0.1
Other	1,902	16 ±0	0.8% ± 0.41%	152 ±2	1 ±0	0.7% ± 0.1%	0.8 ± 0.4
Age 18-34							
Total	45,493	660 ±9	1.5% ± 0.11%	2,807 ±34	55 ±21	2.0% ± 0.8%	1.4 ± 0.5
White	41,667	489 ±8	1.2% ± 0.10%	2,538 ±34	45 ±21	1.8% ± 0.8%	1.5 ± 0.7
Black	2,855	156 ±3	5.5% ± 0.86%	164 ±2	9 ±1	5.4% ± 0.0%	1.0 ± 0.2
Other	971	15 ±0	1.6% ± 0.78%	106 ±2	1 ±0	0.9% ± 0.1%	0.6 ± 0.3
Age 35-49							
Total	47,640	472 ±7	1.0% ± 0.09%	2,381 ±31	43 ±18	1.8% ± 0.7%	1.8 ± 0.8
White	44,960	383 ±7	0.9% ± 0.09%	2,197 ±31	37 ±18	1.7% ± 0.8%	2.0 ± 1.0
Black	2,063	88 ±2	4.3% ± 0.89%	148 ±2	6 ±1	3.9% ± 0.0%	0.9 ± 0.2
Other	617	1 ±0	0.2% ± 0.32%	35 ±1	0 ±0	0.0% ± 0.0%	0.0 ± 0.0
Age 50-64							
Total	33,552	80 ±2	0.2% ± 0.05%	1,037 ±15	8 ±4	0.8% ± 0.4%	3.4 ± 1.7
White	32,073	67 ±2	0.2% ± 0.05%	966 ±15	7 ±4	0.8% ± 0.0%	3.7 ± 0.9
Black	1,165	13 ±0	1.1% ± 0.61%	59 ±1	1 ±0	1.7% ± 0.7%	1.5 ± 1.0
Other	314	0 ±0	0.0% ± 0.00%	11 ±0	0 ±0	0.0% ± 0.0%	-----

This project relied exclusively on analysis of anonymous extracts from databases maintained by Kentucky state agencies. Community Mental Health data was provided by the Kentucky Community Mental Health Programs and includes all adults Served during FY2005. The second data set includes all individuals in adult corrections during the same year. Data was provided by Kentucky Department of Corrections. Race analysis excludes the 1% of individuals for whom race was not reported. Because these data sets do not share unique person identifiers, Probabilistic Population Estimation (PPE) was used to determine caseload size and overlap. Population data was obtained from the 2000 US Census Bureau website <http://www.census.gov/>.

A relative rate of 1.0 indicates no difference in arrest rates between CMH service recipients and the general population. A relative rate that is significantly greater than 1.0 indicates that CMH service recipients have a higher arrest rate. A relative rate of 2.0, for instance, would indicate that CMH recipients were twice as likely as members of the general population to be arrested. A relative rate that is significantly less than 1.0 indicates that CMH service recipients have a lower arrest rate. A relative rate of 0.5, for instance, would indicate that CMH recipients were half as likely to be arrested.

**Rate of Incarceration
For Mental Health Service Recipients and the General Population
and Relative Risk of Incarceration for Mental Health Service Recipients
by Age and Gender, Region 4 - Kentucky: FY2005**

	General Population			Mental Health Service Recipients			Relative Risk
	Total Population	Number Arrested	Arrest Rate	Total Served	Overlap	Rate	
Total	160,369	1,242 ±15	0.8% ± 0.04%	10,288 ±87	206 ±45	2.0% ± 0.4%	2.6 ± 0.6
Male	79,389	1,137 ±15	1.4% ± 0.08%	4,886 ±59	164 ±44	3.4% ± 0.9%	2.3 ± 0.6
Female	80,980	106 ±2	0.1% ± 0.02%	5,402 ±64	43 ±10	0.8% ± 0.2%	6.0 ± 1.9
Age 18-34							
Total	63,312	671 ±12	1.1% ± 0.08%	4,647 ±62	120 ±35	2.6% ± 0.8%	2.4 ± 0.7
Male	31,615	616 ±12	1.9% ± 0.15%	2,350 ±45	99 ±34	4.2% ± 1.5%	2.2 ± 0.8
Female	31,697	55 ±1	0.2% ± 0.05%	2,296 ±43	21 ±8	0.9% ± 0.3%	5.3 ± 2.4
Age 35-49							
Total	56,605	473 ±9	0.8% ± 0.08%	3,811 ±54	74 ±27	1.9% ± 0.7%	2.3 ± 0.9
Male	28,048	424 ±9	1.5% ± 0.14%	1,769 ±36	54 ±27	3.0% ± 1.5%	2.0 ± 1.0
Female	28,557	48 ±1	0.2% ± 0.05%	2,042 ±41	20 ±7	1.0% ± 0.3%	5.9 ± 2.6
Age 50-64							
Total	40,452	98 ±2	0.2% ± 0.05%	1,831 ±27	12 ±8	0.7% ± 0.4%	2.8 ± 1.8
Male	19,726	96 ±2	0.5% ± 0.10%	766 ±16	11 ±8	1.5% ± 1.0%	3.0 ± 2.2
Female	20,726	2 ±0	0.0% ± 0.01%	1,064 ±22	1 ±0	0.1% ± 0.0%	9.7 ± 13.5

This project relied exclusively on analysis of anonymous extracts from databases maintained by Kentucky state agencies. Community Mental Health data was provided by the Kentucky Community Mental Health Programs and includes all adults Served during FY2005. The second data set includes all individuals in adult corrections during the same year. Data was provided by Kentucky Department of Corrections. Race analysis excludes the 1% of individuals for whom race was not reported. Because these data sets do not share unique person identifiers, Probabilistic Population Estimation (PPE) was used to determine caseload size and overlap. Population data was obtained from the 2000 US Census Bureau website <http://www.census.gov/>.

A relative rate of 1.0 indicates no difference in arrest rates between CMH service recipients and the general population. A relative rate that is significantly greater than 1.0 indicates that CMH service recipients have a higher arrest rate. A relative rate of 2.0, for instance, would indicate that CMH recipients were twice as likely as members of the general population to be arrested. A relative rate that is significantly less than 1.0 indicates that CMH service recipients have a lower arrest rate. A relative rate of 0.5, for instance, would indicate that CMH recipients were half as likely to be arrested.

Rate of Incarceration
For Mental Health Service Recipients and the General Population
and Relative Risk of Incarceration for Mental Health Service Recipients
by Age and Race, Region 4 - Kentucky: FY2005

	General Population			Mental Health Service Recipients			Relative Risk
	Total Population	Number Arrested	Arrest Rate	Total Served	Overlap	Rate	
Total	160,369	1,245 ±11	0.8% ± 0.04%	10,288 ±79	224 ±35	2.2% ± 0.3%	2.8 ± 0.5
White	147,028	891 ±10	0.6% ± 0.04%	9,306 ±78	166 ±34	1.8% ± 0.4%	2.9 ± 0.6
Black	9,347	330 ±5	3.5% ± 0.38%	855 ±8	55 ±7	6.4% ± 0.0%	1.8 ± 0.2
Other	3,994	24 ±1	0.6% ± 0.24%	127 ±2	3 ±0	2.4% ± 0.3%	3.9 ± 1.7
Age 18-34							
Total	63,312	673 ±9	1.1% ± 0.08%	4,624 ±56	134 ±26	2.9% ± 0.6%	2.7 ± 0.6
White	57,087	457 ±8	0.8% ± 0.07%	4,179 ±56	98 ±25	2.3% ± 0.6%	2.9 ± 0.8
Black	4,049	197 ±4	4.9% ± 0.68%	380 ±5	34 ±6	8.9% ± 0.0%	1.8 ± 0.3
Other	2,176	20 ±1	0.9% ± 0.40%	65 ±1	2 ±0	3.1% ± 0.6%	3.3 ± 1.6
Age 35-49							
Total	56,605	474 ±7	0.8% ± 0.08%	3,823 ±49	79 ±22	2.1% ± 0.6%	2.5 ± 0.7
White	51,990	353 ±6	0.7% ± 0.07%	3,439 ±49	60 ±22	1.7% ± 0.6%	2.6 ± 1.0
Black	3,402	117 ±2	3.4% ± 0.62%	343 ±5	18 ±4	5.3% ± 0.0%	1.6 ± 0.3
Other	1,213	4 ±0	0.3% ± 0.32%	41 ±1	1 ±0	2.4% ± 0.3%	7.4 ± 7.2
Age 50-64							
Total	40,452	98 ±2	0.2% ± 0.05%	1,841 ±25	11 ±6	0.6% ± 0.3%	2.6 ± 1.5
White	37,951	81 ±2	0.2% ± 0.05%	1,689 ±25	9 ±6	0.5% ± 0.0%	2.4 ± 0.5
Black	1,896	17 ±1	0.9% ± 0.43%	132 ±2	3 ±1	2.2% ± 0.6%	2.4 ± 1.4
Other	605	0 ±0	0.0% ± 0.00%	20 ±1	0 ±0	0.0% ± 0.0%	-----

This project relied exclusively on analysis of anonymous extracts from databases maintained by Kentucky state agencies. Community Mental Health data was provided by the Kentucky Community Mental Health Programs and includes all adults Served during FY2005. The second data set includes all individuals in adult corrections during the same year. Data was provided by Kentucky Department of Corrections. Race analysis excludes the 1% of individuals for whom race was not reported. Because these data sets do not share unique person identifiers, Probabilistic Population Estimation (PPE) was used to determine caseload size and overlap. Population data was obtained from the 2000 US Census Bureau website <http://www.census.gov/>.

A relative rate of 1.0 indicates no difference in arrest rates between CMH service recipients and the general population. A relative rate that is significantly greater than 1.0 indicates that CMH service recipients have a higher arrest rate. A relative rate of 2.0, for instance, would indicate that CMH recipients were twice as likely as members of the general population to be arrested. A relative rate that is significantly less than 1.0 indicates that CMH service recipients have a lower arrest rate. A relative rate of 0.5, for instance, would indicate that CMH recipients were half as likely to be arrested.

**Rate of Incarceration
For Mental Health Service Recipients and the General Population
and Relative Risk of Incarceration for Mental Health Service Recipients
by Age and Gender, Region 5 - Kentucky: FY2005**

	General Population			Mental Health Service Recipients			Relative Risk
	Total Population	Number Arrested	Arrest Rate	Total Served	Overlap	Rate	
Total	150,585	1,190 ±14	0.8% ± 0.04%	6,371 ±54	139 ±36	2.2% ± 0.6%	2.8 ± 0.7
Male	76,487	1,064 ±14	1.4% ± 0.08%	2,858 ±35	113 ±35	3.9% ± 1.2%	2.8 ± 0.9
Female	74,098	126 ±2	0.2% ± 0.03%	3,513 ±41	27 ±9	0.8% ± 0.3%	4.5 ± 1.8
Age 18-34							
Total	56,575	691 ±12	1.2% ± 0.09%	3,032 ±40	85 ±30	2.8% ± 1.0%	2.3 ± 0.8
Male	29,796	621 ±12	2.1% ± 0.16%	1,417 ±27	70 ±29	4.9% ± 2.0%	2.4 ± 1.0
Female	26,779	70 ±2	0.3% ± 0.06%	1,615 ±30	16 ±8	1.0% ± 0.5%	3.7 ± 2.0
Age 35-49							
Total	57,706	424 ±8	0.7% ± 0.07%	2,300 ±32	50 ±20	2.2% ± 0.9%	3.0 ± 1.2
Male	28,850	373 ±7	1.3% ± 0.13%	1,028 ±20	39 ±19	3.8% ± 1.9%	2.9 ± 1.5
Female	28,856	51 ±1	0.2% ± 0.05%	1,272 ±25	11 ±6	0.9% ± 0.4%	4.9 ± 2.8
Age 50-64							
Total	36,304	75 ±2	0.2% ± 0.05%	1,039 ±16	4 ±4	0.4% ± 0.3%	1.8 ± 1.7
Male	17,841	70 ±2	0.4% ± 0.09%	413 ±9	4 ±4	0.9% ± 0.9%	2.3 ± 2.3
Female	18,463	5 ±0	0.0% ± 0.02%	626 ±13	0 ±0	0.0% ± 0.0%	0.0 ± 0.0

This project relied exclusively on analysis of anonymous extracts from databases maintained by Kentucky state agencies. Community Mental Health data was provided by the Kentucky Community Mental Health Programs and includes all adults Served during FY2005. The second data set includes all individuals in adult corrections during the same year. Data was provided by Kentucky Department of Corrections. Race analysis excludes the 1% of individuals for whom race was not reported. Because these data sets do not share unique person identifiers, Probabilistic Population Estimation (PPE) was used to determine caseload size and overlap. Population data was obtained from the 2000 US Census Bureau website <http://www.census.gov/>.

A relative rate of 1.0 indicates no difference in arrest rates between CMH service recipients and the general population. A relative rate that is significantly greater than 1.0 indicates that CMH service recipients have a higher arrest rate. A relative rate of 2.0, for instance, would indicate that CMH recipients were twice as likely as members of the general population to be arrested. A relative rate that is significantly less than 1.0 indicates that CMH service recipients have a lower arrest rate. A relative rate of 0.5, for instance, would indicate that CMH recipients were half as likely to be arrested.

Rate of Incarceration
For Mental Health Service Recipients and the General Population
and Relative Risk of Incarceration for Mental Health Service Recipients
by Age and Race, Region 5 - Kentucky: FY2005

	General Population			Mental Health Service Recipients			Relative Risk
	Total Population	Number Arrested	Arrest Rate	Total Served	Overlap	Rate	
Total	150,585	1,183 ±11	0.8% ± 0.04%	6,323 ±48	114 ±29	1.8% ± 0.5%	2.3 ± 0.6
White	134,692	904 ±11	0.7% ± 0.04%	5,636 ±47	91 ±28	1.6% ± 0.5%	2.4 ± 0.8
Black	11,030	260 ±4	2.4% ± 0.29%	521 ±5	23 ±5	4.4% ± 0.0%	1.9 ± 0.2
Other	4,863	18 ±1	0.4% ± 0.17%	165 ±2	0 ±0	0.0% ± 0.0%	0.0 ± 0.0
Age 18-34							
Total	56,575	687 ±9	1.2% ± 0.09%	2,995 ±35	67 ±23	2.2% ± 0.8%	1.8 ± 0.7
White	49,397	506 ±9	1.0% ± 0.09%	2,633 ±35	51 ±23	2.0% ± 0.9%	1.9 ± 0.9
Black	4,892	170 ±3	3.5% ± 0.52%	270 ±4	15 ±5	5.7% ± 0.0%	1.6 ± 0.2
Other	2,286	12 ±0	0.5% ± 0.30%	92 ±2	0 ±0	0.0% ± 0.0%	0.0 ± 0.0
Age 35-49							
Total	57,706	421 ±6	0.7% ± 0.07%	2,291 ±29	44 ±17	1.9% ± 0.7%	2.6 ± 1.0
White	51,515	334 ±6	0.6% ± 0.07%	2,055 ±29	37 ±17	1.8% ± 0.8%	2.8 ± 1.3
Black	4,434	81 ±2	1.8% ± 0.40%	179 ±3	7 ±2	3.7% ± 0.0%	2.0 ± 0.4
Other	1,757	6 ±0	0.3% ± 0.27%	56 ±1	0 ±0	0.0% ± 0.0%	0.0 ± 0.0
Age 50-64							
Total	36,304	75 ±2	0.2% ± 0.05%	1,037 ±14	3 ±3	0.3% ± 0.3%	1.6 ± 1.5
White	33,780	65 ±2	0.2% ± 0.05%	947 ±14	2 ±3	0.2% ± 0.0%	1.3 ± 0.3
Black	1,704	10 ±0	0.6% ± 0.36%	72 ±1	1 ±0	1.4% ± 0.4%	2.3 ± 1.6
Other	820	0 ±0	0.0% ± 0.00%	17 ±0	0 ±0	0.0% ± 0.0%	-----

This project relied exclusively on analysis of anonymous extracts from databases maintained by Kentucky state agencies. Community Mental Health data was provided by the Kentucky Community Mental Health Programs and includes all adults Served during FY2005. The second data set includes all individuals in adult corrections during the same year. Data was provided by Kentucky Department of Corrections. Race analysis excludes the 1% of individuals for whom race was not reported. Because these data sets do not share unique person identifiers, Probabilistic Population Estimation (PPE) was used to determine caseload size and overlap. Population data was obtained from the 2000 US Census Bureau website <http://www.census.gov/>.

A relative rate of 1.0 indicates no difference in arrest rates between CMH service recipients and the general population. A relative rate that is significantly greater than 1.0 indicates that CMH service recipients have a higher arrest rate. A relative rate of 2.0, for instance, would indicate that CMH recipients were twice as likely as members of the general population to be arrested. A relative rate that is significantly less than 1.0 indicates that CMH service recipients have a lower arrest rate. A relative rate of 0.5, for instance, would indicate that CMH recipients were half as likely to be arrested.

**Rate of Incarceration
For Mental Health Service Recipients and the General Population
and Relative Risk of Incarceration for Mental Health Service Recipients
by Age and Gender, Region 6 - Kentucky: FY2005**

	General Population			Mental Health Service Recipients			Relative Risk
	Total Population	Number Arrested	Arrest Rate	Total Served	Overlap	Rate	
Total	544,760	4,334 ±53	0.8% ± 0.02%	17,964 ±162	273 ±146	1.5% ± 0.8%	1.9 ± 1.0
Male	266,859	4,001 ±53	1.5% ± 0.05%	8,992 ±116	197 ±143	2.2% ± 1.6%	1.5 ± 1.1
Female	277,901	334 ±5	0.1% ± 0.01%	8,972 ±113	77 ±30	0.9% ± 0.3%	7.1 ± 2.9
Age 18-34							
Total	198,748	2,270 ±42	1.1% ± 0.05%	8,066 ±114	162 ±108	2.0% ± 1.3%	1.8 ± 1.2
Male	98,886	2,111 ±42	2.1% ± 0.09%	3,774 ±75	120 ±106	3.2% ± 2.8%	1.5 ± 1.3
Female	99,862	159 ±3	0.2% ± 0.02%	4,292 ±86	42 ±22	1.0% ± 0.5%	6.1 ± 3.3
Age 35-49							
Total	211,327	1,682 ±31	0.8% ± 0.04%	7,000 ±106	105 ±95	1.5% ± 1.4%	1.9 ± 1.7
Male	103,456	1,526 ±31	1.5% ± 0.07%	3,844 ±83	72 ±92	1.9% ± 2.4%	1.3 ± 1.6
Female	107,871	156 ±3	0.1% ± 0.02%	3,156 ±66	34 ±20	1.1% ± 0.6%	7.4 ± 4.5
Age 50-64							
Total	134,685	382 ±8	0.3% ± 0.03%	2,898 ±45	6 ±27	0.2% ± 0.9%	0.7 ± 3.3
Male	64,517	363 ±8	0.6% ± 0.06%	1,374 ±31	4 ±27	0.3% ± 2.0%	0.6 ± 3.5
Female	70,168	19 ±1	0.0% ± 0.01%	1,524 ±33	1 ±5	0.1% ± 0.3%	2.8 ± 11.9

This project relied exclusively on analysis of anonymous extracts from databases maintained by Kentucky state agencies. Community Mental Health data was provided by the Kentucky Community Mental Health Programs and includes all adults Served during FY2005. The second data set includes all individuals in adult corrections during the same year. Data was provided by Kentucky Department of Corrections. Race analysis excludes the 1% of individuals for whom race was not reported. Because these data sets do not share unique person identifiers, Probabilistic Population Estimation (PPE) was used to determine caseload size and overlap. Population data was obtained from the 2000 US Census Bureau website <http://www.census.gov/>.

A relative rate of 1.0 indicates no difference in arrest rates between CMH service recipients and the general population. A relative rate that is significantly greater than 1.0 indicates that CMH service recipients have a higher arrest rate. A relative rate of 2.0, for instance, would indicate that CMH recipients were twice as likely as members of the general population to be arrested. A relative rate that is significantly less than 1.0 indicates that CMH service recipients have a lower arrest rate. A relative rate of 0.5, for instance, would indicate that CMH recipients were half as likely to be arrested.

Rate of Incarceration
For Mental Health Service Recipients and the General Population
and Relative Risk of Incarceration for Mental Health Service Recipients
by Age and Race, Region 6 - Kentucky: FY2005

	General Population			Mental Health Service Recipients			Relative Risk
	Total Population	Number Arrested	Arrest Rate	Total Served	Overlap	Rate	
Total	544,760	4,340 ±37	0.8% ± 0.02%	17,702 ±114	256 ±86	1.4% ± 0.5%	1.8 ± 0.6
White	444,927	1,852 ±21	0.4% ± 0.02%	12,233 ±105	155 ±66	1.3% ± 0.5%	3.0 ± 1.3
Black	81,715	2,415 ±30	3.0% ± 0.12%	5,123 ±44	97 ±54	1.9% ± 0.0%	0.6 ± 0.0
Other	18,118	73 ±1	0.4% ± 0.09%	346 ±3	4 ±1	1.1% ± 0.3%	2.8 ± 1.0
Age 18-34							
Total	198,748	2,291 ±30	1.2% ± 0.05%	7,946 ±81	110 ±61	1.4% ± 0.8%	1.2 ± 0.7
White	155,170	875 ±15	0.6% ± 0.04%	5,543 ±75	88 ±47	1.6% ± 0.8%	2.8 ± 1.5
Black	33,968	1,368 ±25	4.0% ± 0.21%	2,206 ±29	19 ±39	0.9% ± 0.0%	0.2 ± 0.0
Other	9,610	48 ±1	0.5% ± 0.14%	197 ±3	2 ±1	1.0% ± 0.3%	2.0 ± 0.9
Age 35-49							
Total	211,327	1,668 ±21	0.8% ± 0.04%	6,882 ±73	132 ±58	1.9% ± 0.8%	2.4 ± 1.1
White	174,224	773 ±14	0.4% ± 0.03%	4,579 ±66	53 ±45	1.2% ± 1.0%	2.6 ± 2.2
Black	31,404	871 ±16	2.8% ± 0.18%	2,197 ±31	77 ±36	3.5% ± 0.0%	1.3 ± 0.1
Other	5,699	24 ±1	0.4% ± 0.17%	106 ±2	2 ±1	1.8% ± 0.7%	4.3 ± 2.5
Age 50-64							
Total	134,685	381 ±6	0.3% ± 0.03%	2,875 ±34	14 ±18	0.5% ± 0.6%	1.7 ± 2.2
White	115,533	205 ±4	0.2% ± 0.02%	2,112 ±31	13 ±14	0.6% ± 0.0%	3.5 ± 0.5
Black	16,343	175 ±4	1.1% ± 0.16%	720 ±12	1 ±10	0.1% ± 1.5%	0.1 ± 1.4
Other	2,809	1 ±0	0.0% ± 0.07%	43 ±1	0 ±0	0.0% ± 0.0%	0.0 ± 0.0

This project relied exclusively on analysis of anonymous extracts from databases maintained by Kentucky state agencies. Community Mental Health data was provided by the Kentucky Community Mental Health Programs and includes all adults Served during FY2005. The second data set includes all individuals in adult corrections during the same year. Data was provided by Kentucky Department of Corrections. Race analysis excludes the 1% of individuals for whom race was not reported. Because these data sets do not share unique person identifiers, Probabilistic Population Estimation (PPE) was used to determine caseload size and overlap. Population data was obtained from the 2000 US Census Bureau website <http://www.census.gov/>.

A relative rate of 1.0 indicates no difference in arrest rates between CMH service recipients and the general population. A relative rate that is significantly greater than 1.0 indicates that CMH service recipients have a higher arrest rate. A relative rate of 2.0, for instance, would indicate that CMH recipients were twice as likely as members of the general population to be arrested. A relative rate that is significantly less than 1.0 indicates that CMH service recipients have a lower arrest rate. A relative rate of 0.5, for instance, would indicate that CMH recipients were half as likely to be arrested.

**Rate of Incarceration
For Mental Health Service Recipients and the General Population
and Relative Risk of Incarceration for Mental Health Service Recipients
by Age and Gender, Region 7 - Kentucky: FY2005**

	General Population			Mental Health Service Recipients			Relative Risk
	Total Population	Number Arrested	Arrest Rate	Total Served	Overlap	Rate	
Total	244,068	1,874 ±23	0.8% ± 0.03%	5,854 ±49	232 ±49	4.0% ± 0.8%	5.2 ± 1.1
Male	120,820	1,688 ±22	1.4% ± 0.07%	2,775 ±34	165 ±48	5.9% ± 1.7%	4.3 ± 1.2
Female	123,248	186 ±3	0.2% ± 0.02%	3,079 ±36	67 ±11	2.2% ± 0.4%	14.5 ± 3.1
Age 18-34							
Total	94,080	1,081 ±19	1.1% ± 0.07%	2,532 ±33	144 ±38	5.7% ± 1.5%	5.0 ± 1.4
Male	46,752	972 ±19	2.1% ± 0.13%	1,232 ±23	102 ±38	8.3% ± 3.1%	4.0 ± 1.5
Female	47,328	108 ±2	0.2% ± 0.04%	1,300 ±24	42 ±8	3.2% ± 0.6%	14.0 ± 3.8
Age 35-49							
Total	93,821	667 ±12	0.7% ± 0.05%	2,391 ±33	80 ±29	3.4% ± 1.2%	4.7 ± 1.8
Male	46,757	599 ±12	1.3% ± 0.10%	1,171 ±23	58 ±28	4.9% ± 2.4%	3.8 ± 1.9
Female	47,064	68 ±2	0.1% ± 0.03%	1,220 ±24	22 ±7	1.8% ± 0.6%	12.7 ± 5.0
Age 50-64							
Total	56,167	126 ±3	0.2% ± 0.04%	932 ±14	8 ±7	0.9% ± 0.8%	3.9 ± 3.6
Male	27,311	116 ±3	0.4% ± 0.08%	373 ±8	5 ±7	1.3% ± 1.9%	3.1 ± 4.6
Female	28,856	10 ±0	0.0% ± 0.02%	559 ±12	3 ±2	0.6% ± 0.3%	16.7 ± 14.4

This project relied exclusively on analysis of anonymous extracts from databases maintained by Kentucky state agencies. Community Mental Health data was provided by the Kentucky Community Mental Health Programs and includes all adults Served during FY2005. The second data set includes all individuals in adult corrections during the same year. Data was provided by Kentucky Department of Corrections. Race analysis excludes the 1% of individuals for whom race was not reported. Because these data sets do not share unique person identifiers, Probabilistic Population Estimation (PPE) was used to determine caseload size and overlap. Population data was obtained from the 2000 US Census Bureau website <http://www.census.gov/>.

A relative rate of 1.0 indicates no difference in arrest rates between CMH service recipients and the general population. A relative rate that is significantly greater than 1.0 indicates that CMH service recipients have a higher arrest rate. A relative rate of 2.0, for instance, would indicate that CMH recipients were twice as likely as members of the general population to be arrested. A relative rate that is significantly less than 1.0 indicates that CMH service recipients have a lower arrest rate. A relative rate of 0.5, for instance, would indicate that CMH recipients were half as likely to be arrested.

Rate of Incarceration
For Mental Health Service Recipients and the General Population
and Relative Risk of Incarceration for Mental Health Service Recipients
by Age and Race, Region 7 - Kentucky: FY2005

	General Population			Mental Health Service Recipients			Relative Risk
	Total Population	Number Arrested	Arrest Rate	Total Served	Overlap	Rate	
Total	244,068	1,871 ±18	0.8% ± 0.03%	5,848 ±45	227 ±40	3.9% ± 0.7%	5.1 ± 0.9
White	233,338	1,489 ±18	0.6% ± 0.03%	5,269 ±44	187 ±40	3.6% ± 0.8%	5.6 ± 1.2
Black	5,620	360 ±5	6.4% ± 0.66%	499 ±5	39 ±5	7.7% ± 0.0%	1.2 ± 0.1
Other	5,110	22 ±1	0.4% ± 0.18%	80 ±1	1 ±0	1.2% ± 0.1%	2.9 ± 1.2
Age 18-34							
Total	94,080	1,079 ±15	1.1% ± 0.07%	2,528 ±30	140 ±31	5.6% ± 1.2%	4.8 ± 1.1
White	88,884	845 ±14	1.0% ± 0.06%	2,300 ±30	124 ±31	5.4% ± 1.3%	5.7 ± 1.5
Black	2,624	223 ±4	8.5% ± 1.12%	180 ±3	16 ±4	9.1% ± 0.0%	1.1 ± 0.1
Other	2,572	11 ±0	0.4% ± 0.25%	48 ±1	0 ±0	0.0% ± 0.0%	0.0 ± 0.0
Age 35-49							
Total	93,821	665 ±10	0.7% ± 0.05%	2,384 ±30	77 ±25	3.2% ± 1.0%	4.5 ± 1.5
White	89,893	547 ±10	0.6% ± 0.05%	2,119 ±30	57 ±25	2.7% ± 1.2%	4.4 ± 1.9
Black	2,145	110 ±2	5.1% ± 0.96%	241 ±4	19 ±4	7.7% ± 0.0%	1.5 ± 0.3
Other	1,783	8 ±0	0.5% ± 0.31%	24 ±1	1 ±0	4.2% ± 0.4%	9.2 ± 6.5
Age 50-64							
Total	56,167	126 ±2	0.2% ± 0.04%	935 ±13	10 ±4	1.1% ± 0.5%	4.8 ± 2.2
White	54,561	97 ±2	0.2% ± 0.04%	850 ±13	6 ±4	0.7% ± 0.0%	4.1 ± 0.8
Black	851	26 ±1	3.1% ± 1.18%	78 ±1	4 ±1	4.9% ± 1.6%	1.6 ± 0.8
Other	755	3 ±0	0.4% ± 0.45%	8 ±0	0 ±0	0.0% ± 0.0%	0.0 ± 0.0

This project relied exclusively on analysis of anonymous extracts from databases maintained by Kentucky state agencies. Community Mental Health data was provided by the Kentucky Community Mental Health Programs and includes all adults Served during FY2005. The second data set includes all individuals in adult corrections during the same year. Data was provided by Kentucky Department of Corrections. Race analysis excludes the 1% of individuals for whom race was not reported. Because these data sets do not share unique person identifiers, Probabilistic Population Estimation (PPE) was used to determine caseload size and overlap. Population data was obtained from the 2000 US Census Bureau website <http://www.census.gov/>.

A relative rate of 1.0 indicates no difference in arrest rates between CMH service recipients and the general population. A relative rate that is significantly greater than 1.0 indicates that CMH service recipients have a higher arrest rate. A relative rate of 2.0, for instance, would indicate that CMH recipients were twice as likely as members of the general population to be arrested. A relative rate that is significantly less than 1.0 indicates that CMH service recipients have a lower arrest rate. A relative rate of 0.5, for instance, would indicate that CMH recipients were half as likely to be arrested.

**Rate of Incarceration
For Mental Health Service Recipients and the General Population
and Relative Risk of Incarceration for Mental Health Service Recipients
by Age and Gender, Region 8 - Kentucky: FY2005**

	General Population			Mental Health Service Recipients			Relative Risk
	Total Population	Number Arrested	Arrest Rate	Total Served	Overlap	Rate	
Total	33,746	225 ±3	0.7% ± 0.09%	2,739 ±23	42 ±9	1.5% ± 0.3%	2.3 ± 0.6
Male	16,801	203 ±3	1.2% ± 0.17%	1,381 ±17	32 ±9	2.3% ± 0.6%	1.9 ± 0.6
Female	16,945	22 ±1	0.1% ± 0.05%	1,358 ±16	10 ±1	0.7% ± 0.1%	5.4 ± 2.4
Age 18-34							
Total	12,125	141 ±3	1.2% ± 0.19%	1,324 ±17	31 ±8	2.3% ± 0.6%	2.0 ± 0.6
Male	6,082	125 ±3	2.1% ± 0.36%	725 ±13	22 ±7	3.1% ± 1.0%	1.5 ± 0.6
Female	6,043	16 ±0	0.3% ± 0.13%	599 ±11	9 ±1	1.4% ± 0.2%	5.4 ± 2.8
Age 35-49							
Total	12,611	76 ±2	0.6% ± 0.14%	980 ±14	10 ±5	1.0% ± 0.5%	1.7 ± 0.9
Male	6,280	71 ±2	1.1% ± 0.26%	483 ±9	9 ±5	1.9% ± 1.0%	1.6 ± 0.9
Female	6,331	5 ±0	0.1% ± 0.07%	497 ±10	1 ±0	0.2% ± 0.0%	2.5 ± 2.2
Age 50-64							
Total	9,010	9 ±0	0.1% ± 0.07%	434 ±7	1 ±1	0.2% ± 0.2%	2.1 ± 2.2
Male	4,439	8 ±0	0.2% ± 0.13%	174 ±4	1 ±1	0.5% ± 0.4%	2.9 ± 3.1
Female	4,571	1 ±0	0.0% ± 0.04%	261 ±6	0 ±0	0.0% ± 0.0%	0.0 ± 0.0

This project relied exclusively on analysis of anonymous extracts from databases maintained by Kentucky state agencies. Community Mental Health data was provided by the Kentucky Community Mental Health Programs and includes all adults severed during FY2005. The second data set includes all individuals in adult corrections during the same year. Data was provided by Kentucky Department of Corrections. Race analysis excludes the 1% of individuals for whom race was not reported. Because these data sets do not share unique person identifiers, Probabilistic Population Estimation (PPE) was used to determine caseload size and overlap. Population data was obtained from the 2000 US Census Bureau website <http://www.census.gov/>.

A relative rate of 1.0 indicates no difference in arrest rates between CMH service recipients and the general population. A relative rate that is significantly greater than 1.0 indicates that CMH service recipients have a higher arrest rate. A relative rate of 2.0, for instance, would indicate that CMH recipients were twice as likely as members of the general population to be arrested. A relative rate that is significantly less than 1.0 indicates that CMH service recipients have a lower arrest rate. A relative rate of 0.5, for instance, would indicate that CMH recipients were half as likely to be arrested.

Rate of Incarceration
For Mental Health Service Recipients and the General Population
and Relative Risk of Incarceration for Mental Health Service Recipients
by Age and Race, Region 8 - Kentucky: FY2005

	General Population			Mental Health Service Recipients			Relative Risk
	Total Population	Number Arrested	Arrest Rate	Total Served	Overlap	Rate	
Total	33,746	227 ±3	0.7% ± 0.09%	2,737 ±22	41 ±7	1.5% ± 0.3%	2.2 ± 0.5
White	32,500	179 ±3	0.6% ± 0.08%	2,616 ±22	35 ±7	1.3% ± 0.3%	2.5 ± 0.6
Black	865	44 ±1	5.1% ± 1.51%	97 ±1	6 ±0	6.2% ± 0.0%	1.2 ± 0.4
Other	381	4 ±0	1.1% ± 1.03%	24 ±1	0 ±0	0.0% ± 0.0%	0.0 ± 0.0
Age 18-34							
Total	12,125	141 ±2	1.2% ± 0.19%	1,321 ±17	30 ±6	2.3% ± 0.5%	2.0 ± 0.5
White	11,602	119 ±2	1.0% ± 0.18%	1,261 ±17	26 ±6	2.1% ± 0.5%	2.0 ± 0.6
Black	354	21 ±1	6.0% ± 2.54%	49 ±1	4 ±0	8.1% ± 0.0%	1.4 ± 0.6
Other	169	1 ±0	0.6% ± 1.16%	11 ±0	0 ±0	0.0% ± 0.0%	0.0 ± 0.0
Age 35-49							
Total	12,611	76 ±1	0.6% ± 0.14%	979 ±13	10 ±4	1.0% ± 0.4%	1.7 ± 0.8
White	12,146	52 ±1	0.4% ± 0.12%	933 ±13	8 ±4	0.9% ± 0.4%	2.0 ± 1.1
Black	332	21 ±1	6.3% ± 2.71%	37 ±1	2 ±0	5.4% ± 0.0%	0.8 ± 0.4
Other	133	2 ±0	1.5% ± 2.09%	9 ±0	0 ±0	0.0% ± 0.0%	0.0 ± 0.0
Age 50-64							
Total	9,010	10 ±0	0.1% ± 0.07%	437 ±7	1 ±1	0.2% ± 0.1%	2.0 ± 1.6
White	8,752	7 ±0	0.1% ± 0.06%	422 ±7	1 ±1	0.2% ± 0.0%	2.8 ± 2.1
Black	179	2 ±0	1.1% ± 1.55%	11 ±0	0 ±0	0.0% ± 0.0%	0.0 ± 0.0
Other	79	1 ±0	1.3% ± 2.48%	4 ±0	0 ±0	0.0% ± 0.0%	0.0 ± 0.0

This project relied exclusively on analysis of anonymous extracts from databases maintained by Kentucky state agencies. Community Mental Health data was provided by the Kentucky Community Mental Health Programs and includes all adults Served during FY2005. The second data set includes all individuals in adult corrections during the same year. Data was provided by Kentucky Department of Corrections. Race analysis excludes the 1% of individuals for whom race was not reported. Because these data sets do not share unique person identifiers, Probabilistic Population Estimation (PPE) was used to determine caseload size and overlap. Population data was obtained from the 2000 US Census Bureau website <http://www.census.gov/>.

A relative rate of 1.0 indicates no difference in arrest rates between CMH service recipients and the general population. A relative rate that is significantly greater than 1.0 indicates that CMH service recipients have a higher arrest rate. A relative rate of 2.0, for instance, would indicate that CMH recipients were twice as likely as members of the general population to be arrested. A relative rate that is significantly less than 1.0 indicates that CMH service recipients have a lower arrest rate. A relative rate of 0.5, for instance, would indicate that CMH recipients were half as likely to be arrested.

**Rate of Incarceration
For Mental Health Service Recipients and the General Population
and Relative Risk of Incarceration for Mental Health Service Recipients
by Age and Gender, Region 10 - Kentucky: FY2005**

	General Population			Mental Health Service Recipients			Relative Risk
	Total Population	Number Arrested	Arrest Rate	Total Served	Overlap	Rate	
Total	134,205	711 ±9	0.5% ± 0.04%	10,898 ±94	140 ±34	1.3% ± 0.3%	2.4 ± 0.6
Male	67,189	658 ±9	1.0% ± 0.07%	5,266 ±66	113 ±34	2.1% ± 0.6%	2.2 ± 0.7
Female	67,016	53 ±1	0.1% ± 0.02%	5,632 ±68	28 ±6	0.5% ± 0.1%	6.2 ± 2.1
Age 18-34							
Total	50,528	429 ±8	0.8% ± 0.08%	5,243 ±71	111 ±28	2.1% ± 0.5%	2.5 ± 0.7
Male	25,771	395 ±8	1.5% ± 0.15%	2,687 ±52	90 ±28	3.3% ± 1.0%	2.2 ± 0.7
Female	24,757	33 ±1	0.1% ± 0.05%	2,556 ±49	21 ±4	0.8% ± 0.2%	6.1 ± 2.4
Age 35-49							
Total	47,529	228 ±4	0.5% ± 0.06%	3,920 ±56	27 ±19	0.7% ± 0.5%	1.4 ± 1.0
Male	23,747	214 ±4	0.9% ± 0.12%	1,863 ±38	21 ±19	1.1% ± 1.0%	1.3 ± 1.1
Female	23,782	14 ±0	0.1% ± 0.03%	2,057 ±42	5 ±3	0.3% ± 0.2%	4.4 ± 3.4
Age 50-64							
Total	36,148	54 ±1	0.2% ± 0.04%	1,735 ±26	3 ±5	0.2% ± 0.3%	1.1 ± 2.0
Male	17,671	48 ±1	0.3% ± 0.08%	715 ±15	1 ±5	0.2% ± 0.7%	0.7 ± 2.5
Female	18,477	6 ±0	0.0% ± 0.03%	1,020 ±21	1 ±2	0.1% ± 0.2%	4.4 ± 6.2

This project relied exclusively on analysis of anonymous extracts from databases maintained by Kentucky state agencies. Community Mental Health data was provided by the Kentucky Community Mental Health Programs and includes all adults Served during FY2005. The second data set includes all individuals in adult corrections during the same year. Data was provided by Kentucky Department of Corrections. Race analysis excludes the 1% of individuals for whom race was not reported. Because these data sets do not share unique person identifiers, Probabilistic Population Estimation (PPE) was used to determine caseload size and overlap. Population data was obtained from the 2000 US Census Bureau website <http://www.census.gov/>.

A relative rate of 1.0 indicates no difference in arrest rates between CMH service recipients and the general population. A relative rate that is significantly greater than 1.0 indicates that CMH service recipients have a higher arrest rate. A relative rate of 2.0, for instance, would indicate that CMH recipients were twice as likely as members of the general population to be arrested. A relative rate that is significantly less than 1.0 indicates that CMH service recipients have a lower arrest rate. A relative rate of 0.5, for instance, would indicate that CMH recipients were half as likely to be arrested.

Rate of Incarceration
For Mental Health Service Recipients and the General Population
and Relative Risk of Incarceration for Mental Health Service Recipients
by Age and Race, Region 10 - Kentucky: FY2005

	General Population			Mental Health Service Recipients			Relative Risk
	Total Population	Number Arrested	Arrest Rate	Total Served	Overlap	Rate	
Total	134,205	710 ±8	0.5% ± 0.04%	10,601 ±89	137 ±32	1.3% ± 0.3%	2.4 ± 0.6
White	129,799	661 ±8	0.5% ± 0.04%	10,368 ±89	128 ±32	1.2% ± 0.3%	2.4 ± 0.6
Black	2,678	48 ±1	1.8% ± 0.51%	138 ±2	9 ±1	6.5% ± 0.0%	3.6 ± 1.0
Other	1,728	1 ±0	0.1% ± 0.11%	95 ±1	0 ±0	0.0% ± 0.0%	0.0 ± 0.0
Age 18-34							
Total	50,528	429 ±7	0.8% ± 0.08%	5,087 ±67	109 ±26	2.1% ± 0.5%	2.5 ± 0.6
White	48,333	396 ±7	0.8% ± 0.08%	4,974 ±67	102 ±26	2.0% ± 0.5%	2.5 ± 0.7
Black	1,421	31 ±1	2.2% ± 0.77%	71 ±1	7 ±1	9.7% ± 0.0%	4.4 ± 1.6
Other	774	1 ±0	0.1% ± 0.25%	41 ±1	0 ±0	0.0% ± 0.0%	0.0 ± 0.0
Age 35-49							
Total	47,529	227 ±4	0.5% ± 0.06%	3,813 ±53	25 ±18	0.7% ± 0.5%	1.4 ± 1.0
White	46,035	213 ±4	0.5% ± 0.06%	3,727 ±53	23 ±18	0.6% ± 0.5%	1.4 ± 1.1
Black	891	14 ±0	1.6% ± 0.82%	43 ±1	2 ±0	4.6% ± 0.0%	2.9 ± 1.5
Other	603	0 ±0	0.0% ± 0.00%	42 ±1	0 ±0	0.0% ± 0.0%	-----
Age 50-64							
Total	36,148	54 ±1	0.2% ± 0.04%	1,702 ±25	3 ±5	0.2% ± 0.3%	1.1 ± 1.9
White	35,431	51 ±1	0.1% ± 0.04%	1,667 ±25	3 ±5	0.2% ± 0.0%	1.1 ± 0.3
Black	366	3 ±0	0.8% ± 0.93%	23 ±1	0 ±0	0.0% ± 0.0%	0.0 ± 0.0
Other	351	0 ±0	0.0% ± 0.00%	12 ±0	0 ±0	0.0% ± 0.0%	-----

This project relied exclusively on analysis of anonymous extracts from databases maintained by Kentucky state agencies. Community Mental Health data was provided by the Kentucky Community Mental Health Programs and includes all adults Served during FY2005. The second data set includes all individuals in adult corrections during the same year. Data was provided by Kentucky Department of Corrections. Race analysis excludes the 1% of individuals for whom race was not reported. Because these data sets do not share unique person identifiers, Probabilistic Population Estimation (PPE) was used to determine caseload size and overlap. Population data was obtained from the 2000 US Census Bureau website <http://www.census.gov/>.

A relative rate of 1.0 indicates no difference in arrest rates between CMH service recipients and the general population. A relative rate that is significantly greater than 1.0 indicates that CMH service recipients have a higher arrest rate. A relative rate of 2.0, for instance, would indicate that CMH recipients were twice as likely as members of the general population to be arrested. A relative rate that is significantly less than 1.0 indicates that CMH service recipients have a lower arrest rate. A relative rate of 0.5, for instance, would indicate that CMH recipients were half as likely to be arrested.

**Rate of Incarceration
For Mental Health Service Recipients and the General Population
and Relative Risk of Incarceration for Mental Health Service Recipients
by Age and Gender, Region 11 - Kentucky: FY2005**

	General Population			Mental Health Service Recipients			Relative Risk
	Total Population	Number Arrested	Arrest Rate	Total Served	Overlap	Rate	
Total	102,273	470 ±5	0.5% ± 0.04%	7,958 ±66	51 ±21	0.6% ± 0.3%	1.4 ± 0.6
Male	50,476	415 ±5	0.8% ± 0.08%	3,968 ±47	42 ±21	1.1% ± 0.5%	1.3 ± 0.6
Female	51,797	55 ±1	0.1% ± 0.03%	3,990 ±47	9 ±5	0.2% ± 0.1%	2.0 ± 1.4
Age 18-34							
Total	37,290	244 ±4	0.7% ± 0.08%	2,676 ±35	26 ±15	1.0% ± 0.6%	1.5 ± 0.9
Male	18,508	211 ±4	1.1% ± 0.15%	1,314 ±24	21 ±14	1.6% ± 1.1%	1.4 ± 1.0
Female	18,782	33 ±1	0.2% ± 0.06%	1,362 ±26	5 ±5	0.4% ± 0.3%	2.1 ± 2.0
Age 35-49							
Total	38,167	170 ±3	0.4% ± 0.07%	3,282 ±46	20 ±13	0.6% ± 0.4%	1.3 ± 0.9
Male	18,757	152 ±3	0.8% ± 0.13%	1,656 ±33	16 ±13	1.0% ± 0.8%	1.2 ± 1.0
Female	19,410	18 ±1	0.1% ± 0.04%	1,626 ±32	4 ±3	0.2% ± 0.2%	2.5 ± 2.1
Age 50-64							
Total	26,816	56 ±1	0.2% ± 0.05%	2,000 ±31	5 ±7	0.3% ± 0.3%	1.3 ± 1.7
Male	13,211	52 ±1	0.4% ± 0.11%	998 ±22	5 ±7	0.5% ± 0.7%	1.4 ± 1.8
Female	13,605	4 ±0	0.0% ± 0.03%	1,002 ±22	0 ±0	0.0% ± 0.0%	0.0 ± 0.0

This project relied exclusively on analysis of anonymous extracts from databases maintained by Kentucky state agencies. Community Mental Health data was provided by the Kentucky Community Mental Health Programs and includes all adults Served during FY2005. The second data set includes all individuals in adult corrections during the same year. Data was provided by Kentucky Department of Corrections. Race analysis excludes the 1% of individuals for whom race was not reported. Because these data sets do not share unique person identifiers, Probabilistic Population Estimation (PPE) was used to determine caseload size and overlap. Population data was obtained from the 2000 US Census Bureau website <http://www.census.gov/>.

A relative rate of 1.0 indicates no difference in arrest rates between CMH service recipients and the general population. A relative rate that is significantly greater than 1.0 indicates that CMH service recipients have a higher arrest rate. A relative rate of 2.0, for instance, would indicate that CMH recipients were twice as likely as members of the general population to be arrested. A relative rate that is significantly less than 1.0 indicates that CMH service recipients have a lower arrest rate. A relative rate of 0.5, for instance, would indicate that CMH recipients were half as likely to be arrested.

Rate of Incarceration
For Mental Health Service Recipients and the General Population
and Relative Risk of Incarceration for Mental Health Service Recipients
by Age and Race, Region 11 - Kentucky: FY2005

	General Population			Mental Health Service Recipients			Relative Risk
	Total Population	Number Arrested	Arrest Rate	Total Served	Overlap	Rate	
Total	102,273	469 ±5	0.5% ± 0.04%	7,961 ±66	49 ±21	0.6% ± 0.3%	1.3 ± 0.6
White	100,619	466 ±5	0.5% ± 0.04%	7,922 ±66	49 ±21	0.6% ± 0.3%	1.3 ± 0.6
Black	689	3 ±0	0.4% ± 0.49%	28 ±1	0 ±0	0.0% ± 0.0%	0.0 ± 0.0
Other	965	0 ±0	0.0% ± 0.00%	11 ±0	0 ±0	0.0% ± 0.0%	-----
Age 18-34							
Total	37,290	244 ±4	0.7% ± 0.08%	2,681 ±35	25 ±15	0.9% ± 0.6%	1.4 ± 0.9
White	36,504	242 ±4	0.7% ± 0.08%	2,666 ±35	25 ±15	0.9% ± 0.6%	1.4 ± 0.9
Black	429	2 ±0	0.5% ± 0.65%	11 ±0	0 ±0	0.0% ± 0.0%	0.0 ± 0.0
Other	357	0 ±0	0.0% ± 0.00%	4 ±0	0 ±0	0.0% ± 0.0%	-----
Age 35-49							
Total	38,167	169 ±3	0.4% ± 0.07%	3,279 ±46	19 ±13	0.6% ± 0.4%	1.3 ± 0.9
White	37,644	168 ±3	0.4% ± 0.07%	3,263 ±46	19 ±13	0.6% ± 0.4%	1.3 ± 0.9
Black	190	1 ±0	0.5% ± 1.03%	12 ±0	0 ±0	0.0% ± 0.0%	0.0 ± 0.0
Other	333	0 ±0	0.0% ± 0.00%	4 ±0	0 ±0	0.0% ± 0.0%	-----
Age 50-64							
Total	26,816	56 ±1	0.2% ± 0.05%	2,000 ±31	4 ±7	0.2% ± 0.3%	1.0 ± 1.7
White	26,471	56 ±1	0.2% ± 0.06%	1,992 ±31	4 ±7	0.2% ± 0.0%	1.0 ± 0.3
Black	70	0 ±0	0.0% ± 0.00%	5 ±0	0 ±0	0.0% ± 0.0%	-----
Other	275	0 ±0	0.0% ± 0.00%	3 ±0	0 ±0	0.0% ± 0.0%	-----

This project relied exclusively on analysis of anonymous extracts from databases maintained by Kentucky state agencies. Community Mental Health data was provided by the Kentucky Community Mental Health Programs and includes all adults Served during FY2005. The second data set includes all individuals in adult corrections during the same year. Data was provided by Kentucky Department of Corrections. Race analysis excludes the 1% of individuals for whom race was not reported. Because these data sets do not share unique person identifiers, Probabilistic Population Estimation (PPE) was used to determine caseload size and overlap. Population data was obtained from the 2000 US Census Bureau website <http://www.census.gov/>.

A relative rate of 1.0 indicates no difference in arrest rates between CMH service recipients and the general population. A relative rate that is significantly greater than 1.0 indicates that CMH service recipients have a higher arrest rate. A relative rate of 2.0, for instance, would indicate that CMH recipients were twice as likely as members of the general population to be arrested. A relative rate that is significantly less than 1.0 indicates that CMH service recipients have a lower arrest rate. A relative rate of 0.5, for instance, would indicate that CMH recipients were half as likely to be arrested.

**Rate of Incarceration
For Mental Health Service Recipients and the General Population
and Relative Risk of Incarceration for Mental Health Service Recipients
by Age and Gender, Region 12 - Kentucky: FY2005**

	General Population			Mental Health Service Recipients			Relative Risk
	Total Population	Number Arrested	Arrest Rate	Total Served	Overlap	Rate	
Total	76,684	348 ±4	0.5% ± 0.05%	9,238 ±78	60 ±20	0.7% ± 0.2%	1.4 ± 0.5
Male	38,115	305 ±4	0.8% ± 0.09%	4,596 ±55	41 ±19	0.9% ± 0.4%	1.1 ± 0.5
Female	38,569	42 ±1	0.1% ± 0.03%	4,642 ±55	20 ±4	0.4% ± 0.1%	3.9 ± 1.5
Age 18-34							
Total	27,653	171 ±3	0.6% ± 0.09%	3,999 ±53	47 ±14	1.2% ± 0.4%	1.9 ± 0.6
Male	13,837	147 ±3	1.1% ± 0.17%	1,992 ±37	34 ±14	1.7% ± 0.7%	1.6 ± 0.7
Female	13,816	23 ±1	0.2% ± 0.07%	2,007 ±38	12 ±4	0.6% ± 0.2%	3.7 ± 1.9
Age 35-49							
Total	28,857	131 ±3	0.5% ± 0.08%	3,498 ±50	11 ±13	0.3% ± 0.4%	0.7 ± 0.8
Male	14,324	114 ±2	0.8% ± 0.15%	1,749 ±35	3 ±13	0.2% ± 0.7%	0.3 ± 0.9
Female	14,533	17 ±1	0.1% ± 0.06%	1,750 ±35	7 ±2	0.4% ± 0.1%	3.5 ± 2.0
Age 50-64							
Total	20,174	46 ±1	0.2% ± 0.07%	1,740 ±27	3 ±3	0.2% ± 0.2%	0.7 ± 0.8
Male	9,954	44 ±1	0.4% ± 0.13%	855 ±19	3 ±3	0.3% ± 0.4%	0.8 ± 0.9
Female	10,220	2 ±0	0.0% ± 0.03%	885 ±19	0 ±0	0.0% ± 0.0%	0.0 ± 0.0

This project relied exclusively on analysis of anonymous extracts from databases maintained by Kentucky state agencies. Community Mental Health data was provided by the Kentucky Community Mental Health Programs and includes all adults Served during FY2005. The second data set includes all individuals in adult corrections during the same year. Data was provided by Kentucky Department of Corrections. Race analysis excludes the 1% of individuals for whom race was not reported. Because these data sets do not share unique person identifiers, Probabilistic Population Estimation (PPE) was used to determine caseload size and overlap. Population data was obtained from the 2000 US Census Bureau website <http://www.census.gov/>.

A relative rate of 1.0 indicates no difference in arrest rates between CMH service recipients and the general population. A relative rate that is significantly greater than 1.0 indicates that CMH service recipients have a higher arrest rate. A relative rate of 2.0, for instance, would indicate that CMH recipients were twice as likely as members of the general population to be arrested. A relative rate that is significantly less than 1.0 indicates that CMH service recipients have a lower arrest rate. A relative rate of 0.5, for instance, would indicate that CMH recipients were half as likely to be arrested.

Rate of Incarceration
For Mental Health Service Recipients and the General Population
and Relative Risk of Incarceration for Mental Health Service Recipients
by Age and Race, Region 12 - Kentucky: FY2005

	General Population			Mental Health Service Recipients			Relative Risk
	Total Population	Number Arrested	Arrest Rate	Total Served	Overlap	Rate	
Total	76,684	346 ±4	0.5% ± 0.05%	8,732 ±72	59 ±19	0.7% ± 0.2%	1.5 ± 0.5
White	75,326	339 ±4	0.5% ± 0.05%	8,669 ±72	59 ±19	0.7% ± 0.2%	1.5 ± 0.5
Black	740	7 ±0	0.9% ± 0.70%	39 ±1	0 ±0	0.0% ± 0.0%	0.0 ± 0.0
Other	618	0 ±0	0.0% ± 0.00%	24 ±1	0 ±0	0.0% ± 0.0%	-----
Age 18-34							
Total	27,653	170 ±3	0.6% ± 0.09%	3,686 ±49	43 ±13	1.2% ± 0.4%	1.9 ± 0.7
White	27,098	167 ±3	0.6% ± 0.09%	3,656 ±49	43 ±13	1.2% ± 0.4%	1.9 ± 0.7
Black	346	3 ±0	0.9% ± 0.98%	14 ±0	0 ±0	0.0% ± 0.0%	0.0 ± 0.0
Other	209	0 ±0	0.0% ± 0.00%	16 ±0	0 ±0	0.0% ± 0.0%	-----
Age 35-49							
Total	28,857	131 ±2	0.5% ± 0.08%	3,358 ±47	12 ±12	0.4% ± 0.4%	0.8 ± 0.8
White	28,348	128 ±2	0.5% ± 0.08%	3,338 ±47	12 ±12	0.4% ± 0.4%	0.8 ± 0.8
Black	284	3 ±0	1.1% ± 1.20%	15 ±0	0 ±0	0.0% ± 0.0%	0.0 ± 0.0
Other	225	0 ±0	0.0% ± 0.00%	5 ±0	0 ±0	0.0% ± 0.0%	-----
Age 50-64							
Total	20,174	45 ±1	0.2% ± 0.07%	1,688 ±26	3 ±3	0.2% ± 0.2%	0.8 ± 0.9
White	19,880	44 ±1	0.2% ± 0.07%	1,675 ±26	3 ±3	0.2% ± 0.0%	0.8 ± 0.2
Black	110	1 ±0	0.9% ± 1.78%	10 ±0	0 ±0	0.0% ± 0.0%	0.0 ± 0.0
Other	184	0 ±0	0.0% ± 0.00%	3 ±0	0 ±0	0.0% ± 0.0%	-----

This project relied exclusively on analysis of anonymous extracts from databases maintained by Kentucky state agencies. Community Mental Health data was provided by the Kentucky Community Mental Health Programs and includes all adults Served during FY2005. The second data set includes all individuals in adult corrections during the same year. Data was provided by Kentucky Department of Corrections. Race analysis excludes the 1% of individuals for whom race was not reported. Because these data sets do not share unique person identifiers, Probabilistic Population Estimation (PPE) was used to determine caseload size and overlap. Population data was obtained from the 2000 US Census Bureau website <http://www.census.gov/>.

A relative rate of 1.0 indicates no difference in arrest rates between CMH service recipients and the general population. A relative rate that is significantly greater than 1.0 indicates that CMH service recipients have a higher arrest rate. A relative rate of 2.0, for instance, would indicate that CMH recipients were twice as likely as members of the general population to be arrested. A relative rate that is significantly less than 1.0 indicates that CMH service recipients have a lower arrest rate. A relative rate of 0.5, for instance, would indicate that CMH recipients were half as likely to be arrested.

**Rate of Incarceration
For Mental Health Service Recipients and the General Population
and Relative Risk of Incarceration for Mental Health Service Recipients
by Age and Gender, Region 13 - Kentucky: FY2005**

	General Population			Mental Health Service Recipients			Relative Risk
	Total Population	Number Arrested	Arrest Rate	Total Served	Overlap	Rate	
Total	148,060	1,162 ±13	0.8% ± 0.05%	11,515 ±98	225 ±45	2.0% ± 0.4%	2.5 ± 0.5
Male	73,344	1,019 ±13	1.4% ± 0.09%	5,849 ±71	183 ±43	3.1% ± 0.7%	2.2 ± 0.5
Female	74,716	142 ±2	0.2% ± 0.03%	5,666 ±67	42 ±13	0.7% ± 0.2%	3.9 ± 1.4
Age 18-34							
Total	55,458	609 ±10	1.1% ± 0.09%	5,061 ±68	131 ±34	2.6% ± 0.7%	2.4 ± 0.6
Male	27,724	523 ±10	1.9% ± 0.16%	2,614 ±50	98 ±32	3.8% ± 1.2%	2.0 ± 0.7
Female	27,734	86 ±2	0.3% ± 0.07%	2,447 ±46	32 ±10	1.3% ± 0.4%	4.3 ± 1.6
Age 35-49							
Total	53,361	439 ±8	0.8% ± 0.08%	4,335 ±62	81 ±28	1.9% ± 0.7%	2.3 ± 0.8
Male	26,381	389 ±8	1.5% ± 0.15%	2,260 ±46	72 ±27	3.2% ± 1.2%	2.2 ± 0.8
Female	26,980	49 ±1	0.2% ± 0.05%	2,075 ±42	8 ±8	0.4% ± 0.4%	2.2 ± 2.2
Age 50-64							
Total	39,241	114 ±2	0.3% ± 0.05%	2,120 ±32	13 ±9	0.6% ± 0.4%	2.1 ± 1.5
Male	19,239	107 ±2	0.6% ± 0.11%	976 ±21	12 ±9	1.2% ± 0.9%	2.1 ± 1.7
Female	20,002	7 ±0	0.0% ± 0.03%	1,144 ±24	1 ±2	0.1% ± 0.2%	3.1 ± 5.6

This project relied exclusively on analysis of anonymous extracts from databases maintained by Kentucky state agencies. Community Mental Health data was provided by the Kentucky Community Mental Health Programs and includes all adults Served during FY2005. The second data set includes all individuals in adult corrections during the same year. Data was provided by Kentucky Department of Corrections. Race analysis excludes the 1% of individuals for whom race was not reported. Because these data sets do not share unique person identifiers, Probabilistic Population Estimation (PPE) was used to determine caseload size and overlap. Population data was obtained from the 2000 US Census Bureau website <http://www.census.gov/>.

A relative rate of 1.0 indicates no difference in arrest rates between CMH service recipients and the general population. A relative rate that is significantly greater than 1.0 indicates that CMH service recipients have a higher arrest rate. A relative rate of 2.0, for instance, would indicate that CMH recipients were twice as likely as members of the general population to be arrested. A relative rate that is significantly less than 1.0 indicates that CMH service recipients have a lower arrest rate. A relative rate of 0.5, for instance, would indicate that CMH recipients were half as likely to be arrested.

Rate of Incarceration
For Mental Health Service Recipients and the General Population
and Relative Risk of Incarceration for Mental Health Service Recipients
by Age and Race, Region 13 - Kentucky: FY2005

	General Population			Mental Health Service Recipients			Relative Risk
	Total Population	Number Arrested	Arrest Rate	Total Served	Overlap	Rate	
Total	148,060	1,162 ±13	0.8% ± 0.05%	11,515 ±96	218 ±44	1.9% ± 0.4%	2.4 ± 0.5
White	143,643	1,116 ±13	0.8% ± 0.05%	11,368 ±96	214 ±44	1.9% ± 0.4%	2.4 ± 0.5
Black	2,438	45 ±1	1.9% ± 0.54%	131 ±2	4 ±1	3.0% ± 0.0%	1.6 ± 0.5
Other	1,979	0 ±0	0.0% ± 0.00%	16 ±0	0 ±0	0.0% ± 0.0%	-----
Age 18-34							
Total	55,458	609 ±10	1.1% ± 0.09%	5,062 ±67	128 ±33	2.5% ± 0.7%	2.3 ± 0.6
White	53,627	587 ±10	1.1% ± 0.09%	5,006 ±67	126 ±33	2.5% ± 0.7%	2.3 ± 0.6
Black	1,093	22 ±1	2.0% ± 0.84%	46 ±1	2 ±0	4.3% ± 0.0%	2.1 ± 0.9
Other	738	0 ±0	0.0% ± 0.00%	9 ±0	0 ±0	0.0% ± 0.0%	-----
Age 35-49							
Total	53,361	438 ±8	0.8% ± 0.08%	4,331 ±61	78 ±28	1.8% ± 0.6%	2.2 ± 0.8
White	51,757	419 ±8	0.8% ± 0.08%	4,273 ±61	76 ±28	1.8% ± 0.6%	2.2 ± 0.8
Black	891	19 ±1	2.1% ± 0.96%	53 ±1	2 ±1	3.7% ± 0.0%	1.7 ± 0.8
Other	713	0 ±0	0.0% ± 0.00%	4 ±0	0 ±0	0.0% ± 0.0%	-----
Age 50-64							
Total	39,241	114 ±2	0.3% ± 0.05%	2,123 ±31	13 ±9	0.6% ± 0.4%	2.1 ± 1.5
White	38,259	110 ±2	0.3% ± 0.05%	2,088 ±31	13 ±9	0.6% ± 0.0%	2.1 ± 0.4
Black	454	4 ±0	0.9% ± 0.86%	31 ±1	0 ±0	0.0% ± 0.0%	0.0 ± 0.0
Other	528	0 ±0	0.0% ± 0.00%	3 ±0	0 ±0	0.0% ± 0.0%	-----

This project relied exclusively on analysis of anonymous extracts from databases maintained by Kentucky state agencies. Community Mental Health data was provided by the Kentucky Community Mental Health Programs and includes all adults Served during FY2005. The second data set includes all individuals in adult corrections during the same year. Data was provided by Kentucky Department of Corrections. Race analysis excludes the 1% of individuals for whom race was not reported. Because these data sets do not share unique person identifiers, Probabilistic Population Estimation (PPE) was used to determine caseload size and overlap. Population data was obtained from the 2000 US Census Bureau website <http://www.census.gov/>.

A relative rate of 1.0 indicates no difference in arrest rates between CMH service recipients and the general population. A relative rate that is significantly greater than 1.0 indicates that CMH service recipients have a higher arrest rate. A relative rate of 2.0, for instance, would indicate that CMH recipients were twice as likely as members of the general population to be arrested. A relative rate that is significantly less than 1.0 indicates that CMH service recipients have a lower arrest rate. A relative rate of 0.5, for instance, would indicate that CMH recipients were half as likely to be arrested.

**Rate of Incarceration
For Mental Health Service Recipients and the General Population
and Relative Risk of Incarceration for Mental Health Service Recipients
by Age and Gender, Region 14 - Kentucky: FY2005**

	General Population			Mental Health Service Recipients			Relative Risk
	Total Population	Number Arrested	Arrest Rate	Total Served	Overlap	Rate	
Total	118,438	913 ±10	0.8% ± 0.05%	6,811 ±56	112 ±31	1.6% ± 0.5%	2.1 ± 0.6
Male	58,350	786 ±10	1.3% ± 0.09%	3,256 ±39	64 ±30	2.0% ± 0.9%	1.5 ± 0.7
Female	60,088	127 ±2	0.2% ± 0.04%	3,555 ±41	48 ±8	1.3% ± 0.2%	6.4 ± 1.6
Age 18-34							
Total	41,767	510 ±9	1.2% ± 0.11%	2,965 ±39	69 ±25	2.3% ± 0.8%	1.9 ± 0.7
Male	20,826	432 ±8	2.1% ± 0.20%	1,499 ±28	35 ±24	2.3% ± 1.6%	1.1 ± 0.8
Female	20,941	78 ±2	0.4% ± 0.08%	1,465 ±27	34 ±7	2.3% ± 0.5%	6.3 ± 1.9
Age 35-49							
Total	42,652	315 ±6	0.7% ± 0.08%	2,502 ±35	36 ±17	1.4% ± 0.7%	1.9 ± 1.0
Male	21,058	273 ±5	1.3% ± 0.15%	1,183 ±23	24 ±17	2.1% ± 1.4%	1.6 ± 1.1
Female	21,594	42 ±1	0.2% ± 0.06%	1,319 ±26	12 ±5	0.9% ± 0.4%	4.5 ± 2.3
Age 50-64							
Total	34,019	88 ±2	0.3% ± 0.05%	1,344 ±20	7 ±6	0.5% ± 0.4%	2.1 ± 1.7
Male	16,466	81 ±2	0.5% ± 0.11%	573 ±12	5 ±6	0.9% ± 1.0%	1.8 ± 2.1
Female	17,553	7 ±0	0.0% ± 0.03%	771 ±16	2 ±0	0.3% ± 0.0%	6.5 ± 4.8

This project relied exclusively on analysis of anonymous extracts from databases maintained by Kentucky state agencies. Community Mental Health data was provided by the Kentucky Community Mental Health Programs and includes all adults Served during FY2005. The second data set includes all individuals in adult corrections during the same year. Data was provided by Kentucky Department of Corrections. Race analysis excludes the 1% of individuals for whom race was not reported. Because these data sets do not share unique person identifiers, Probabilistic Population Estimation (PPE) was used to determine caseload size and overlap. Population data was obtained from the 2000 US Census Bureau website <http://www.census.gov/>.

A relative rate of 1.0 indicates no difference in arrest rates between CMH service recipients and the general population. A relative rate that is significantly greater than 1.0 indicates that CMH service recipients have a higher arrest rate. A relative rate of 2.0, for instance, would indicate that CMH recipients were twice as likely as members of the general population to be arrested. A relative rate that is significantly less than 1.0 indicates that CMH service recipients have a lower arrest rate. A relative rate of 0.5, for instance, would indicate that CMH recipients were half as likely to be arrested.

Rate of Incarceration
For Mental Health Service Recipients and the General Population
and Relative Risk of Incarceration for Mental Health Service Recipients
by Age and Race, Region 14 - Kentucky: FY2005

	General Population			Mental Health Service Recipients			Relative Risk
	Total Population	Number Arrested	Arrest Rate	Total Served	Overlap	Rate	
Total	118,438	917 ±10	0.8% ± 0.05%	6,806 ±54	114 ±28	1.7% ± 0.4%	2.2 ± 0.6
White	114,963	823 ±9	0.7% ± 0.05%	6,534 ±54	102 ±28	1.6% ± 0.4%	2.2 ± 0.6
Black	1,967	85 ±1	4.3% ± 0.92%	192 ±2	12 ±1	6.2% ± 0.0%	1.4 ± 0.3
Other	1,508	8 ±0	0.5% ± 0.37%	79 ±1	0 ±0	0.0% ± 0.0%	0.0 ± 0.0
Age 18-34							
Total	41,767	513 ±8	1.2% ± 0.11%	2,960 ±37	72 ±23	2.4% ± 0.8%	2.0 ± 0.6
White	40,338	465 ±8	1.2% ± 0.10%	2,838 ±37	66 ±23	2.3% ± 0.8%	2.0 ± 0.7
Black	774	43 ±1	5.6% ± 1.67%	76 ±1	6 ±1	7.8% ± 0.0%	1.4 ± 0.4
Other	655	5 ±0	0.8% ± 0.67%	45 ±1	0 ±0	0.0% ± 0.0%	0.0 ± 0.0
Age 35-49							
Total	42,652	315 ±5	0.7% ± 0.08%	2,498 ±34	35 ±16	1.4% ± 0.6%	1.9 ± 0.9
White	41,446	278 ±5	0.7% ± 0.08%	2,396 ±34	29 ±16	1.2% ± 0.7%	1.8 ± 1.0
Black	724	37 ±1	5.1% ± 1.65%	75 ±1	6 ±1	7.9% ± 0.0%	1.5 ± 0.5
Other	482	0 ±0	0.0% ± 0.00%	27 ±1	0 ±0	0.0% ± 0.0%	-----
Age 50-64							
Total	34,019	88 ±2	0.3% ± 0.05%	1,347 ±19	6 ±5	0.5% ± 0.4%	1.8 ± 1.5
White	33,179	80 ±2	0.2% ± 0.05%	1,300 ±19	6 ±5	0.5% ± 0.0%	2.0 ± 0.4
Black	469	5 ±0	1.1% ± 0.94%	40 ±1	0 ±0	0.0% ± 0.0%	0.0 ± 0.0
Other	371	3 ±0	0.8% ± 0.92%	7 ±0	0 ±0	0.0% ± 0.0%	0.0 ± 0.0

This project relied exclusively on analysis of anonymous extracts from databases maintained by Kentucky state agencies. Community Mental Health data was provided by the Kentucky Community Mental Health Programs and includes all adults Served during FY2005. The second data set includes all individuals in adult corrections during the same year. Data was provided by Kentucky Department of Corrections. Race analysis excludes the 1% of individuals for whom race was not reported. Because these data sets do not share unique person identifiers, Probabilistic Population Estimation (PPE) was used to determine caseload size and overlap. Population data was obtained from the 2000 US Census Bureau website <http://www.census.gov/>.

A relative rate of 1.0 indicates no difference in arrest rates between CMH service recipients and the general population. A relative rate that is significantly greater than 1.0 indicates that CMH service recipients have a higher arrest rate. A relative rate of 2.0, for instance, would indicate that CMH recipients were twice as likely as members of the general population to be arrested. A relative rate that is significantly less than 1.0 indicates that CMH service recipients have a lower arrest rate. A relative rate of 0.5, for instance, would indicate that CMH recipients were half as likely to be arrested.

**Rate of Incarceration
For Mental Health Service Recipients and the General Population
and Relative Risk of Incarceration for Mental Health Service Recipients
by Age and Gender, Region 15 - Kentucky: FY2005**

	General Population			Mental Health Service Recipients			Relative Risk
	Total Population	Number Arrested	Arrest Rate	Total Served	Overlap	Rate	
Total	451,161	2,790 ±33	0.6% ± 0.02%	15,196 ±134	291 ±91	1.9% ± 0.6%	3.1 ± 1.0
Male	222,817	2,526 ±33	1.1% ± 0.04%	6,414 ±80	212 ±88	3.3% ± 1.4%	2.9 ± 1.2
Female	228,344	264 ±4	0.1% ± 0.01%	8,783 ±108	79 ±25	0.9% ± 0.3%	7.8 ± 2.6
Age 18-34							
Total	189,903	1,562 ±27	0.8% ± 0.04%	6,698 ±93	189 ±71	2.8% ± 1.1%	3.4 ± 1.3
Male	95,578	1,413 ±27	1.5% ± 0.08%	2,943 ±57	151 ±68	5.1% ± 2.3%	3.5 ± 1.6
Female	94,325	149 ±3	0.2% ± 0.03%	3,755 ±74	39 ±20	1.0% ± 0.5%	6.5 ± 3.5
Age 35-49							
Total	158,855	1,011 ±18	0.6% ± 0.04%	5,808 ±86	93 ±54	1.6% ± 0.9%	2.5 ± 1.5
Male	77,934	908 ±18	1.2% ± 0.08%	2,498 ±51	54 ±52	2.2% ± 2.1%	1.9 ± 1.8
Female	80,921	103 ±2	0.1% ± 0.02%	3,311 ±69	39 ±15	1.2% ± 0.4%	9.3 ± 3.9
Age 50-64							
Total	102,403	217 ±5	0.2% ± 0.03%	2,690 ±43	8 ±17	0.3% ± 0.6%	1.4 ± 3.0
Male	49,305	206 ±5	0.4% ± 0.06%	973 ±22	7 ±16	0.7% ± 1.7%	1.8 ± 4.0
Female	53,098	11 ±0	0.0% ± 0.01%	1,717 ±37	1 ±5	0.0% ± 0.3%	2.1 ± 12.9

This project relied exclusively on analysis of anonymous extracts from databases maintained by Kentucky state agencies. Community Mental Health data was provided by the Kentucky Community Mental Health Programs and includes all adults Served during FY2005. The second data set includes all individuals in adult corrections during the same year. Data was provided by Kentucky Department of Corrections. Race analysis excludes the 1% of individuals for whom race was not reported. Because these data sets do not share unique person identifiers, Probabilistic Population Estimation (PPE) was used to determine caseload size and overlap. Population data was obtained from the 2000 US Census Bureau website <http://www.census.gov/>.

A relative rate of 1.0 indicates no difference in arrest rates between CMH service recipients and the general population. A relative rate that is significantly greater than 1.0 indicates that CMH service recipients have a higher arrest rate. A relative rate of 2.0, for instance, would indicate that CMH recipients were twice as likely as members of the general population to be arrested. A relative rate that is significantly less than 1.0 indicates that CMH service recipients have a lower arrest rate. A relative rate of 0.5, for instance, would indicate that CMH recipients were half as likely to be arrested.

Rate of Incarceration
For Mental Health Service Recipients and the General Population
and Relative Risk of Incarceration for Mental Health Service Recipients
by Age and Race, Region 15 - Kentucky: FY2005

	General Population			Mental Health Service Recipients			Relative Risk
	Total Population	Number Arrested	Arrest Rate	Total Served	Overlap	Rate	
Total	451,161	2,801 ±23	0.6% ± 0.02%	15,180 ±117	225 ±64	1.5% ± 0.4%	2.4 ± 0.7
White	401,120	1,683 ±19	0.4% ± 0.02%	13,271 ±116	160 ±61	1.2% ± 0.5%	2.9 ± 1.1
Black	35,284	1,044 ±13	3.0% ± 0.18%	1,657 ±14	65 ±19	3.9% ± 0.0%	1.3 ± 0.1
Other	14,757	73 ±1	0.5% ± 0.11%	252 ±3	1 ±1	0.4% ± 0.2%	0.8 ± 0.5
Age 18-34							
Total	189,903	1,573 ±19	0.8% ± 0.04%	6,692 ±81	137 ±49	2.1% ± 0.7%	2.5 ± 0.9
White	165,322	919 ±16	0.6% ± 0.04%	5,836 ±81	97 ±47	1.7% ± 0.8%	3.0 ± 1.5
Black	16,050	606 ±11	3.8% ± 0.30%	716 ±10	40 ±14	5.6% ± 0.0%	1.5 ± 0.1
Other	8,531	47 ±1	0.6% ± 0.16%	139 ±2	1 ±1	0.7% ± 0.4%	1.2 ± 0.8
Age 35-49							
Total	158,855	1,010 ±13	0.6% ± 0.04%	5,817 ±75	77 ±39	1.3% ± 0.7%	2.1 ± 1.1
White	141,711	612 ±11	0.4% ± 0.03%	5,044 ±74	54 ±37	1.1% ± 0.7%	2.5 ± 1.7
Black	12,727	373 ±7	2.9% ± 0.30%	685 ±10	22 ±12	3.3% ± 0.0%	1.1 ± 0.1
Other	4,417	25 ±1	0.6% ± 0.22%	88 ±2	0 ±0	0.0% ± 0.0%	0.0 ± 0.0
Age 50-64							
Total	102,403	218 ±4	0.2% ± 0.03%	2,672 ±38	11 ±12	0.4% ± 0.5%	2.0 ± 2.2
White	94,087	152 ±3	0.2% ± 0.03%	2,391 ±38	9 ±12	0.4% ± 0.0%	2.2 ± 0.4
Black	6,507	65 ±2	1.0% ± 0.24%	256 ±4	3 ±1	1.1% ± 0.4%	1.1 ± 0.5
Other	1,809	1 ±0	0.1% ± 0.11%	25 ±1	0 ±0	0.0% ± 0.0%	0.0 ± 0.0

This project relied exclusively on analysis of anonymous extracts from databases maintained by Kentucky state agencies. Community Mental Health data was provided by the Kentucky Community Mental Health Programs and includes all adults Served during FY2005. The second data set includes all individuals in adult corrections during the same year. Data was provided by Kentucky Department of Corrections. Race analysis excludes the 1% of individuals for whom race was not reported. Because these data sets do not share unique person identifiers, Probabilistic Population Estimation (PPE) was used to determine caseload size and overlap. Population data was obtained from the 2000 US Census Bureau website <http://www.census.gov/>.

A relative rate of 1.0 indicates no difference in arrest rates between CMH service recipients and the general population. A relative rate that is significantly greater than 1.0 indicates that CMH service recipients have a higher arrest rate. A relative rate of 2.0, for instance, would indicate that CMH recipients were twice as likely as members of the general population to be arrested. A relative rate that is significantly less than 1.0 indicates that CMH service recipients have a lower arrest rate. A relative rate of 0.5, for instance, would indicate that CMH recipients were half as likely to be arrested.

PROBABILISTIC POPULATION ESTIMATION

Probabilistic Population Estimation is a statistical procedure that determines the number of people (with known confidence intervals) who are represented in data sets that do not contain unique person identifiers. Probabilistic Population Estimation uses information on the distribution of birth dates in a data set to determine the number of people represented in the data set. The number of people necessary to produce the number of birthdays observed in a single birth year cohort, for instance, would be calculated using the following formula:

$$P_j(l_j) = \sum_{i=1}^{l_j} \frac{365}{365-i}$$

where “ P_j ” is the number of people and “ l_j ” is the number of birth dates observed. Similar logic is used to determine the number of people who appear in more than one data set. The table below provides illustrative results of Probabilistic Population Estimation for populations of specified size.

Population Estimates for Specified Numbers of Birth Dates Within a Year

Birth Dates	Number of People	Birth Dates	Number of People
1	1.003 ± .103	180	249 ± 20
10	10.15 ± .776	250	423 ± 38
20	20.6 ± 1.54	300	632 ± 64
50	54. ± 4	330	860 ± 101
100	117. ± 9	360	1603 ± 325

POPULATION OVERLAP

In order to probabilistically determine the number of people shared across data sets that do not include a common person identifier, the sizes of three populations are determined and the results are compared. The number of people in each of the original data sets are the first two populations. The number of people in a data set that is formed by combining the two original data sets is the third data set.

The number of people who are shared by the two data sets is the difference between the sum of the numbers of people represented in the two original data sets and the number of people represented in the combined data set. This occurs because the sum of the number of people represented in the two original data sets includes a double count of every person who is represented in both data sets. The number of people represented in the combined data set does not include this duplication. The difference between these two numbers is the size of the duplication between the two original data sets, the size of the caseload overlap. In terms of mathematical set theory, the intersection of two sets is the difference between the sum of the sizes of the two sets ($A+B$) and the union of the two sets ($A \cup B$):

$$(A \cap B) = (A + B) - (A \cup B).$$

Analysis conducted by:
THE BRISTOL OBSERVATORY
www.thebristolobservatory.com bristob@together.net

Data Sets

The data sets used in this project were analyzed using the Probabilistic Population Estimation (PPE) statistical procedure. PPE is based on four data elements: year of birth, month of birth, day of birth, and gender. (1) A data set that includes more than 364 dates of birth within a single birth-year/gender cohort, the data set is not suitable for PPE. This problem may be remedied by the addition of geographic, race/ethnic, or other reliable data elements to the analysis. (2) If large numbers of records do not have legitimate values for these data elements, PPE will underestimate the number of people represented in the data set. (3) If any months or days of birth appear in the data set more often than expected, “administrative” dates of birth may have been entered.

Mental Health Data Sets

2005 Data set contained the following variables: Client_ID, Region_No, byr, bmon, bday, gender, Client_Status_Code, Race, SSI_or_SSDI, Primary_Diagnosis_Ind, Severe_Mental_Illness.

A maximum of 366 days for a year/gender cohort was observed. This data set was not suitable for PPE without further segmentation. Regional breakdowns addressed the problem of birth years exceeding the maximum allowable dates of birth. The geographical information required for regional breakdowns was provided. **With these adjustments the data set is suitable for PPE analysis.**

The data set included 195,350 records, 1,424 (0.7%) were missing gender and 7,819(4%) had invalid birth dates, leaving 186,713 usable records. The distribution of months of birth was within acceptable limits with effect sizes ranging from 0.93 to 1.08. The distribution of days of birth was within acceptable limits with effect sizes ranging from 0.97 to 1.07.

Incarceration Data Sets

2005 Data set contained the following variables: Race, Sex, bmon, bday, birthyr, byr, InstID, InmateNo, SPN, OffCode, YrCrimCom, MonCrimCom, DayCrimCom, YrConv, MonConv, DayConv, Length, County, GBMI, FelonyClass.

A maximum of 315 dates for a year/gender cohort was observed. **This data set was suitable for PPE** without further segmentation.

The data set included 19,528 records, 5 were missing gender and 3 had invalid birth dates, leaving 19,523 usable records. The distribution of months of birth was within acceptable limits with effect sizes ranging from 0.88 to 1.08. The distribution of days of birth was within acceptable limits with effect sizes ranging from 0.90 to 1.05.

RELATED READINGS

Probabilistic Population Estimation

Probabilistic Population Estimation of the Size and Overlap of Data Sets Based on Date of Birth. *Statistics in Medicine*, May 2001 (Banks and Pandiani).

Personal Privacy vs. Public Accountability: A Technological Solution to an Ethical Dilemma. *Journal of Behavioral Health Services and Research*, November 1998. (Pandiani, Banks, and Schacht)

Large Data Sets Are Powerful. *Psychiatric Services*, May 2003 54 (5) 746 (Pandiani and Banks)

Criminal Justice Involvement of Mental Health Service Recipients

Using Incarceration Rates to Measure Mental Health Program Performance. *Journal of Behavioral Health Services and Research*, August 1999. (Pandiani, Banks, and Schacht)

Elevated Risk of Being Charged with a Crime for People with a Severe and Persistent Mental Illness. *Justice Research and Policy*, Fall 2000 (Pandiani, Banks, Clements, and Schacht)

Terrorism and People with Mental Illness. *Psychiatric Services*. 52 (11) 1475. (Pandiani, and Banks)

Consumer Satisfaction and Treatment Outcomes: Dissatisfaction with Mental Health Services and Incarceration after Treatment. *Administration and Policy in Mental Health*. November 2001 29 (2) 145-155 (Pandiani, Schacht, Banks)

Approaches to Risk Adjusting Outcome Measures Applied to Criminal Justice Involvement after Community Service. *Journal of Behavioral Health Services and Research*. 2001 (Banks, Pandiani, and Bramley)

Utilization of Local Jails and General Hospitals by State Psychiatric Center Patients. *Journal of Behavioral Health Services and Research*, November 2000 (Banks, Stone, Pandiani, Cox, and Morchauser)

Bed Closures and Incarceration Among Users of VA Behavioral Health Services in Upstate New York. *Psychiatric Services*, October 2000 (Rosenheck, Banks, Pandiani, Hoff)

Measuring Access to Mental Health Care: A Multi-indicator Approach to Program Evaluation. *Program Planning and Evaluation*. 2002 25 271-285. (Pandiani, Banks, Bramley, Pomeroy, Simon).

After Children's Services: A Longitudinal Study of Significant Life Events. *Journal of Emotional and Behavioral Disorders*, Summer 2001 9 (2) 131-138 (Banks, Pandiani, and Schacht)

Caseload Segregation/Integration and Treatment Outcomes for Children and Adolescents. *Journal of Emotional and Behavioral Disorders*. Winter 2001 9 (4) 232-238, 247 (Banks, Pandiani, and Schacht)

Elevated Risk of Arrest for Veteran's Administration Behavioral Health Service Recipients in Four Florida Counties. *Law and Human Behavior*. In Press. (Pandiani, Rosenheck, and Banks)